



LOS ANGELES UNIFIED SCHOOL DISTRICT  
MULTILINGUAL AND MULTICULTURAL  
EDUCATION DEPARTMENT (MMED)



**DUAL  
LANGUAGE  
EDUCATION**  
WORLD  
LANGUAGES  
AND CULTURES



**2021-22 DIRECTORY**



**“ Knowledge of languages is the  
doorway to wisdom. ”**  
**- Roger Bacon**

# Content

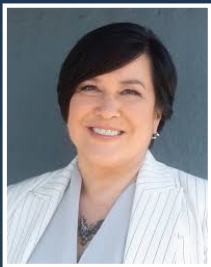
Superintendent & Chief Academic Officer Message	1
MMED Executive Director & Director Message	2
Acknowledgements	3
Language Programs	4
Bilingualism and Education Timeline	5
Benefits of Learning Multiple Languages and Cultures	7
Dual Language in Early Education	9
Dual Language Education (DLE) Program Types	11
Goals of DLE	13
First DLE Programs in L.A. Unified	14
DLE Programs	15
Pathway Award and Seal of Biliteracy	32
World Languages and A-G Requirements	36
World Languages Programs	37

The information contained herein may be subject to change.



# Interim Superintendent and Chief Academic Officer Message

Dear L.A. Unified Community,



Continuing with our goal of all students graduating bilingual and biliterate, the Dual Language Education Programs and World Languages and Cultures Directory 2021-2022 will provide you with information on all Language Learning Programs offered in L.A. Unified.

We currently offer Dual Language Education programs in 7 languages: Arabic, Armenian, French, Japanese, Korean, Mandarin and Spanish, and we are working on adding Filipino in School Year 2022-2023. In addition, we look forward to adding more World Language courses at secondary schools, to ensure students continue on the path to becoming bilingual and biliterate.

Sincerely,

**Megan K. Reilly**  
Interim Superintendent, L.A. Unified

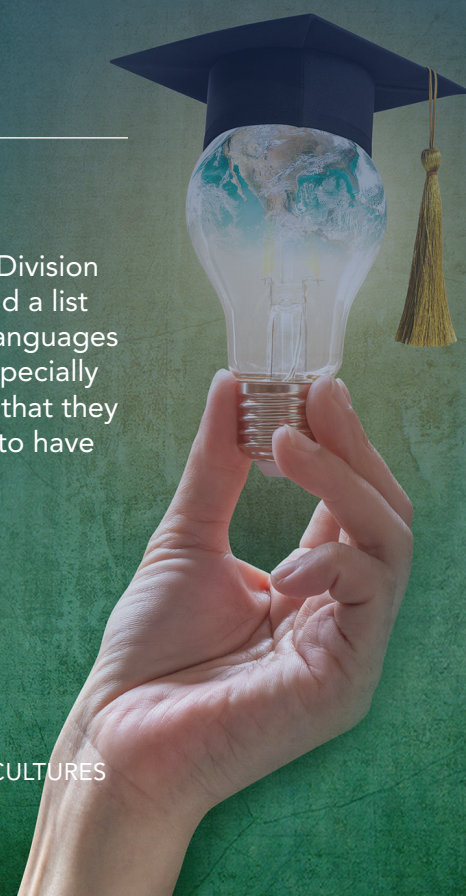
Dear L.A. Unified Community,



This directory represents the cultural diversity that the Division of Instruction in L.A. Unified embraces. In it you will find a list of all Dual Language Education programs and World Languages and Cultures courses offered in our schools. We are especially proud of these programs because of the global access that they afford our students. We hope you will be encouraged to have your students participate in them.

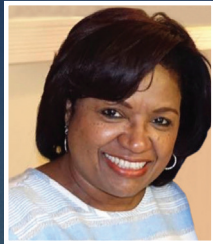
Sincerely,

**Alison Yoshimoto-Towery**  
Chief Academic Officer, Division of Instruction



# MMED Executive Director/Dual Language & World Languages Director

Dear L.A. Unified Friends and Family,



As lifelong English Language Learners we understand the importance of identity, of valuing ours and others' home culture, and extending our ability to communicate in a global society. We are therefore proud to offer this directory of TK-12 language learning programs 2021-2022 in L.A. Unified. This year we feature both our Dual Language Education, and our World Languages and Cultures programs, in the hopes of giving our families and community access to existing programs for all. Our goal is that all our students earn the 5/6, 8 Pathway Award and the L.A. Unified and State

Seal of Biliteracy in 12th grade.

Dual Language Education and World Languages and Cultures programs promote fluency in languages other than English. These programs are assets-based, and they benefit all students, regardless of language classification or socioeconomic status, by affording them the opportunity of becoming bilingual and biliterate.

The 2018 Master Plan for English Learners and Standard English Learners highlights programs leading to bilingualism and biliteracy for all language classifications inclusive of English Only, English Learners, Reclassified English Learners, and Standard English Learners. Students who participate in these programs demonstrate increased academic performance; develop skills in two or more languages that enhance brain functioning with long-term cognitive benefits; and leverage translanguaging to enhance communication in multiple settings.

We are proud of our schools offering these programs, as they are engaging students in rigorous instruction that leads to the learning of language, content, and culture. By accessing this directory, you too are promoting bilingualism, biliteracy and multiculturalism in your students!

Sincerely,

**Lydia Acosta Stephens**  
Executive Director  
Multilingual and Multicultural Education Department

**Dr. Dalys Stewart**  
Director  
Dual Language & World Languages Programs

# Acknowledgements



## INTERIM SUPERINTENDENT

Megan K. Reilly

## BOARD MEMBERS

Kelly Gonez, *Board District 6, Board President*

Dr. George McKenna III, *Board District 1*

Mónica García, *Board District 2*

Scott M. Schmerelson, *Board District 3*

Nick Melvoin, *Board District 4*

Jackie Goldberg, *Board District 5*

Tanya Ortiz Franklin, *Board District 7*

## CHIEF ACADEMIC OFFICER

Alison Yoshimoto-Towery

## LOCAL DISTRICT SUPERINTENDENTS

Frances Baez, *Central*

Jose P. Huerta, *East*

Andres Chait, *Northeast*

Joseph Nacorda, *Northwest*

Michael Romero, *South*

Adaina Brown, *West*

## ADMINISTRATORS OF INSTRUCTION

Andre Spicer, *Central*

Julie Gonzalez, *Central*

Lourdes Ramirez-Ortiz, *East*

Cristina Muñoz, *East*

Sandra Gephart Fontana, *Northeast*

Alma Flores, *Northeast*

Margaret Kim, *Northwest*

Alma Kimura, *South*

John Vladovic, *South*

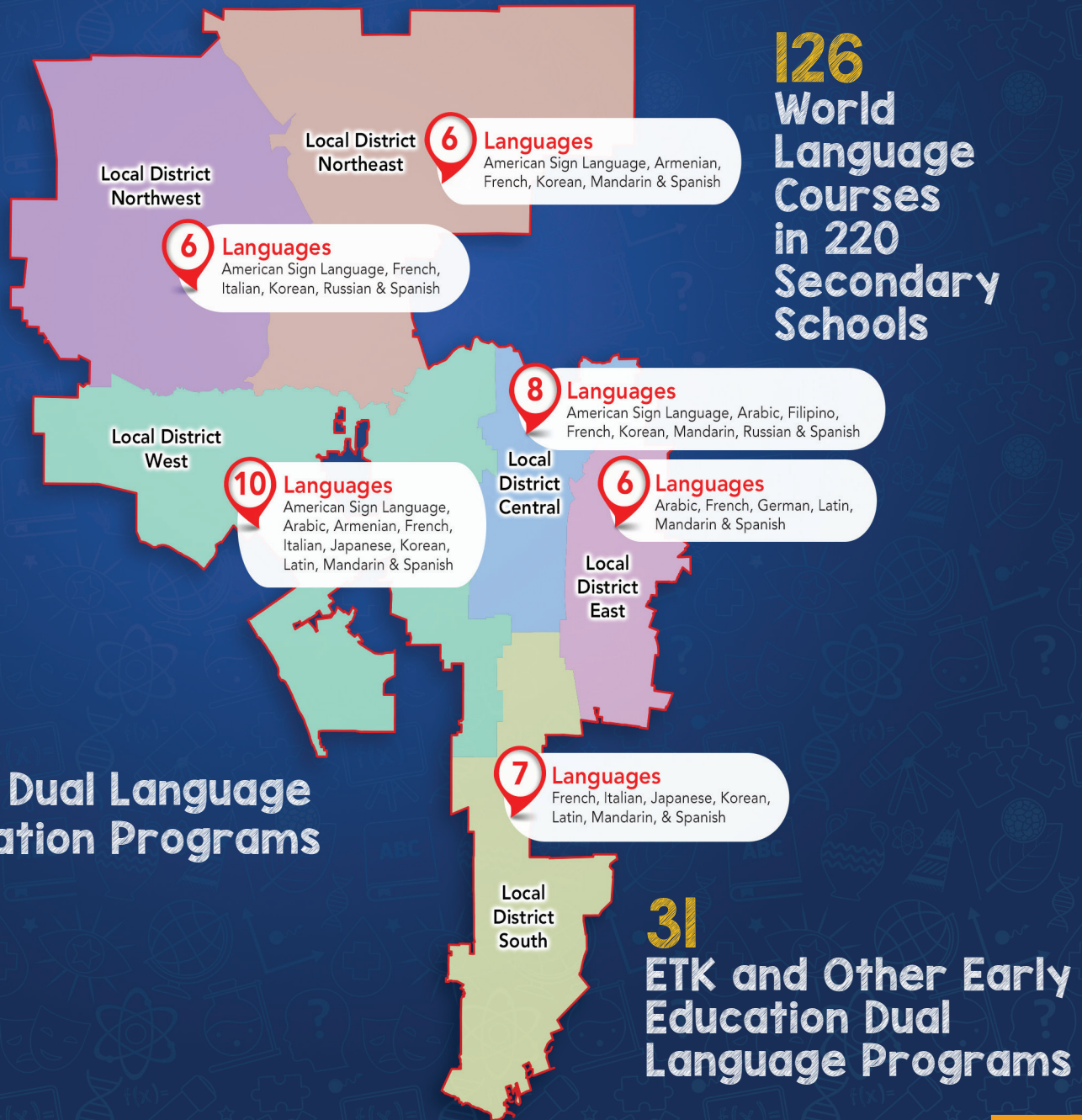
Ramon Corley, *West*

Karen Mercado, *West*

# Language Programs in L.A. Unified

**126**  
World  
Language  
Courses  
in 220  
Secondary  
Schools

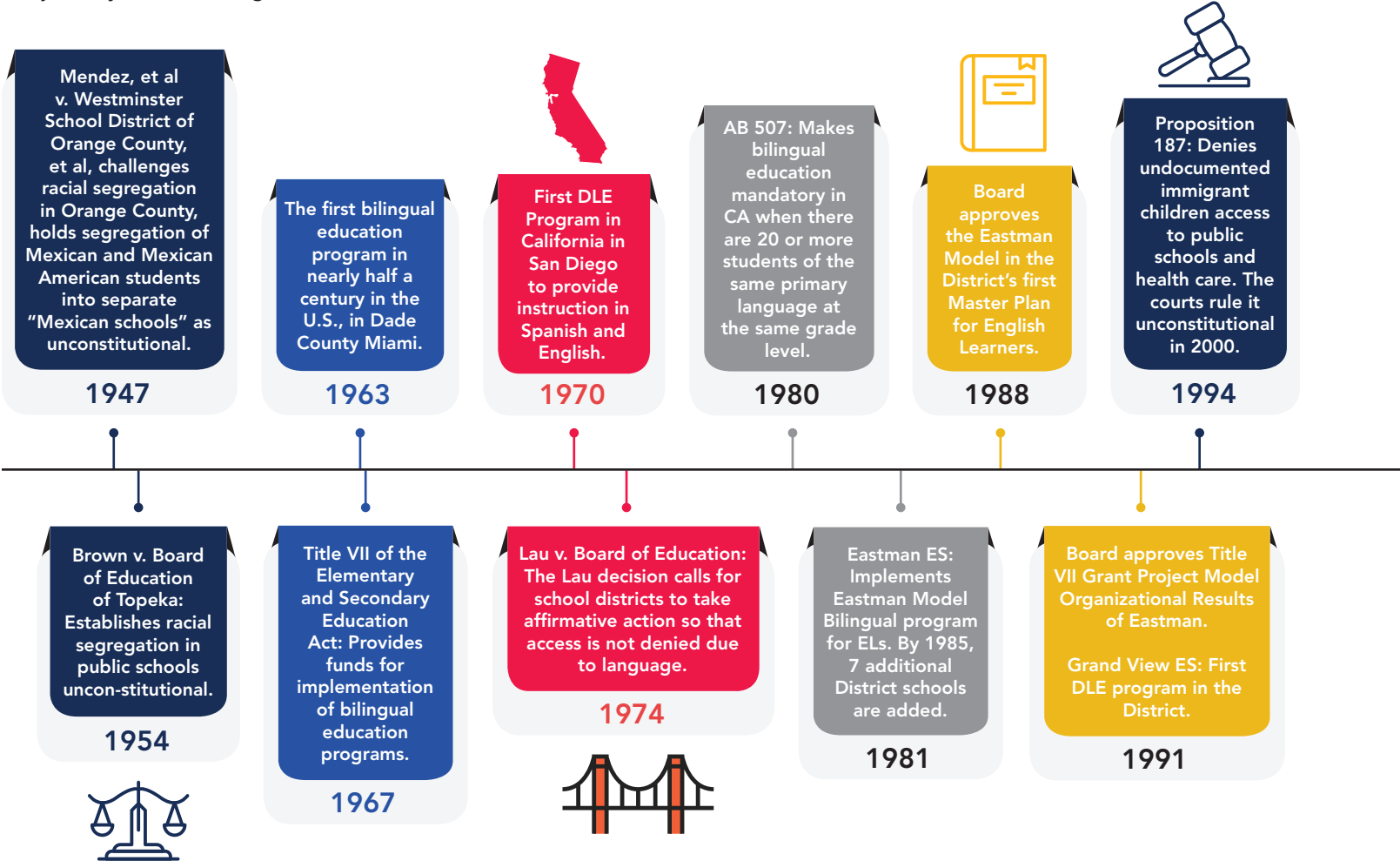
**211**  
TK-I2 Dual Language  
Education Programs



**31**  
ETK and Other Early  
Education Dual  
Language Programs

# Bilingualism and Education in L.A. Unified, California & the United States

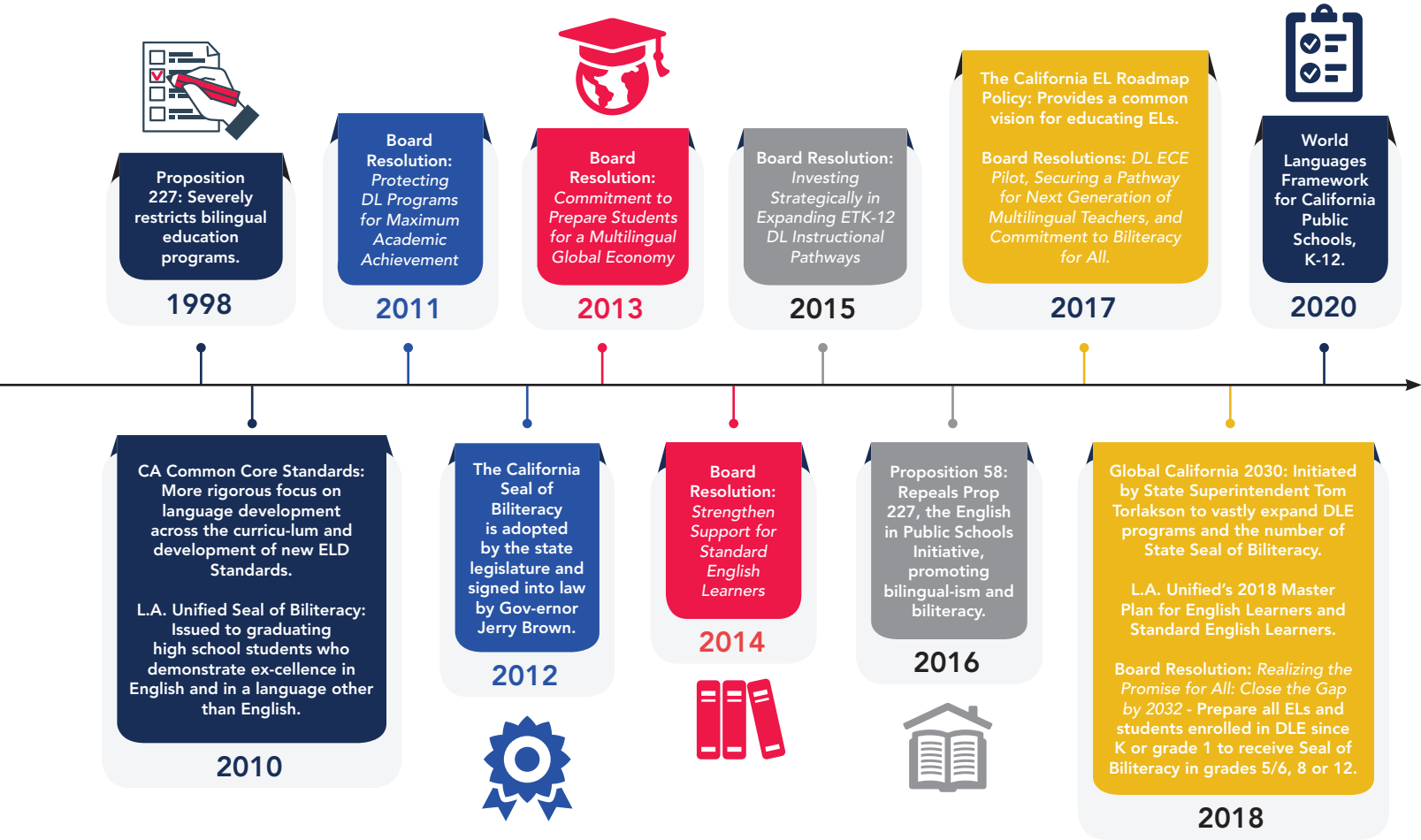
“The history of the U.S. and the state California is deeply interwoven with the complex stories of migration, cultural integration and multilingualism – often in the context of systematic resistance and exclusion. The same history, however, paints a vivid image of those who pushed and fought back to ensure that the linguistic, cultural, and human rights of all members of our community and nation are honored, respected, and accepted. While many milestones have been reached, the journey and the struggle continues.”





# Bilingualism and Education in L.A. Unified, California & the United States

“This timeline is dedicated to the visionaries and advocates who have led, and continue to lead us, toward a nation and society that honors and exemplifies the vision of multilingualism for all.” – Bilingualism and Education in California & the United States - A Timeline by Dr. Laurie Olsen for The California Association for Bilingual Education in partnership with Californians Together.



# What Are the Benefits of Learning Multiple Languages and Cultures?

## Lifelong Advantages



### Brain and Cognitive

- Cognitive flexibility
- Improves decision-making skills
- Better problem-solving abilities



### Academic

- Increased academic performance
- Awareness of language
- CA Seal of Biliteracy
- Advance language courses
- L.A. Unified Biliteracy Awards



### Economic

- More career opportunities
- Competitive in the global economy



### Multicultural Awareness

- Awareness and understanding of other cultures
- Develop compassion about the world and people from different backgrounds



### Stronger Family & Heritage Connections

- Access to the wisdom of their heritage cultures
- Bridge builders for their families

Adapted from California's Together: The California Campaign for Biliteracy

“ Although it is often said that knowing two languages makes a person twice as valuable, we like to stress that knowing two or more languages provides greater opportunities to work on behalf of humanity. ”  
- Alma Flor Ada, et al



The process of becoming bilingual includes a transformation of one’s identity. In the simplest form one goes from being a monolingual to a bilingual person. At a more complex level, that new identity includes entering the community and history of other speakers of the language. Inherent in the new identity, is a new responsibility. The responsibility includes learning about the experiences and status of speakers of the language in the immediate and global context. With this knowledge comes the responsibility to use one’s privilege and status as someone receiving the language to advocate for those to whom the language is their mother tongue. Learning a language from others is a gift. In accepting this gift, one also accepts the responsibility of honoring it.

# Dual Language in Early Education

Dual Language in Early Education has been implemented under the guidance of the Sobrato Early Academy Language (SEAL) model. The programs offer instruction in the target language (Spanish, Korean, Mandarin, Armenian) and in English. The teachers maintain the target language following the 50/50 model and “switch” to English at half day. There is a thematic connection across the target language and English portions of the curriculum, with intentional planning about what will be done in which language. Participating teachers are trained in three foundational principles: (1) Establish a strong foundation for Dual Language Learners, (2) Create a 21st century vision of learning based on the Preschool Learning Foundations, and (3) Provide high quality programs through research-based teaching practices. Each of these principles is built in conjunction with growth in academic language, positive learning environments and development of the whole child.



School	Program	Board District	Local District	Language
<b>Cohort 1: 2017-2018, 2018-2019</b>				
Denker Ave. Elementary School	ETK/PCC	7	South	Korean
Eastman Avenue Elementary School	ETK	2	East	Spanish
Gates Early Education Center	EEC	2	East	Spanish
Grand View Elementary School	ETK   ETK*	4	West	Spanish
Montara Avenue Elementary School	ETK	5	East	Spanish
Nevada Avenue Elementary School	ETK	3	Northwest	Spanish
Vista Del Valle Elementary School	CSPP   TK*	6	Northeast	Spanish

CSPP – California State Preschool Program ETK – Expanded Transitional Kinder EEC – Early Education Center  
PCC – Preschool Collaborative Classrooms TK – Transitional Kinder |\* Means 2 programs



# Dual Language in Early Education

School	Program	Board District	Local District	Language
<b>Cohort 2: 2019-2020</b>				
135th Street Elementary School	ETK	1	South	Spanish
Castelar Street Elementary School	ETK	2	Central	Mandarin
Eastman Avenue Early Education Center	EEC	2	East	Spanish
El Sereno Early Education Center	EEC	5	East	Spanish
Ford Boulevard Elementary School	ETK	5	East	Spanish
Gates Early Education Center	EEC	2	East	Spanish
Gratts Early Education Center	EEC	2	Central	Spanish
Main Street Elementary School	ETK	7	Central	Spanish
San Fernando Early Education Center	EEC	6	Northeast	Spanish
Saticoy Elementary School	ETK	6	Northeast	Armenian
Wilton Place Early Education Center	EEC	2	West	Spanish

CSPP – California State Preschool Program ETK – Expanded Transitional Kinder EEC – Early Education Center  
 PCC – Preschool Collaborative Classrooms TK – Transitional Kinder

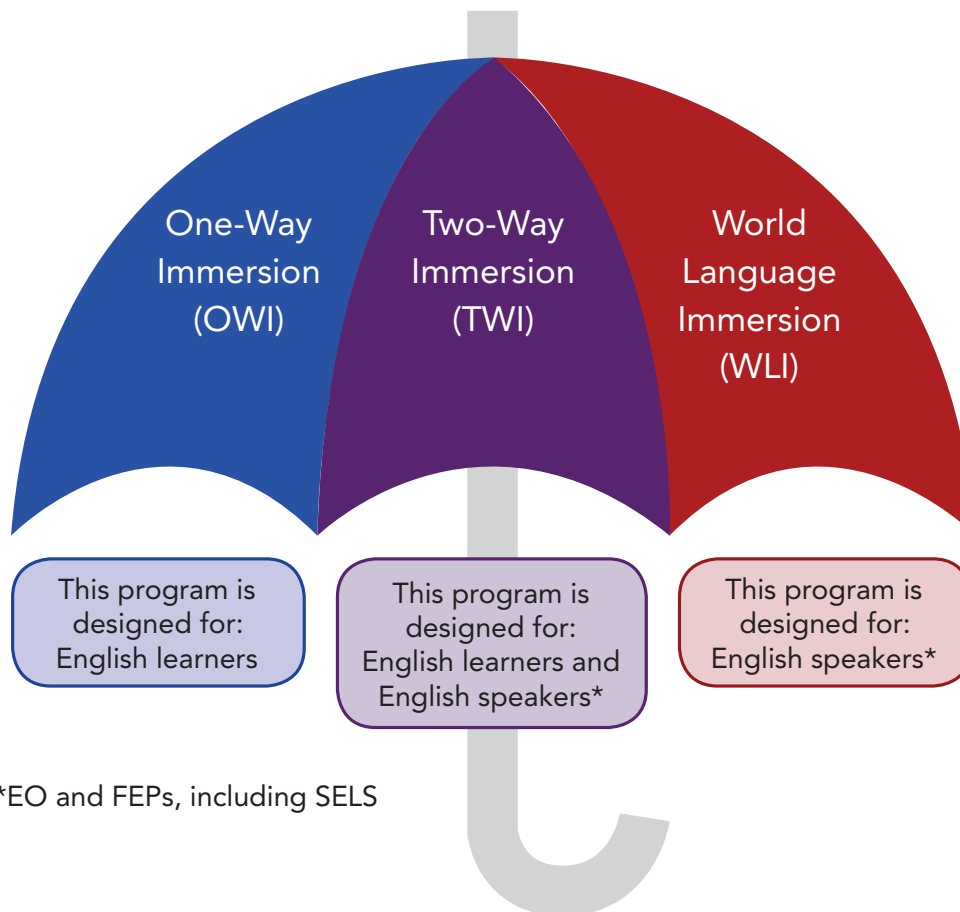
School	Program	Board District	Local District	Language
<b>Cohort 3: 2021-2022</b>				
61st St. Elementary School	ETK	1	West	Spanish
City Terrace Elementary School	ETK	5	East	Mandarin
Gardena Elementary School	ETK	7	South	Spanish
Graham Early Education Center	EEC	7	South	Spanish
Huntington Park Elementary School	CSPP	5	East	Spanish
Lockwood Elementary School	ETK	5	Central	Spanish
Logan Early Education Center	EEC	5	Central	Spanish
Miles Avenue Early Education Center	EEC	5	East	Spanish
San Miguel Elementary School	ETK	5	East	Spanish
Telfair Elementary School	ETK	6	Northeast	Spanish
Wilshire Crest Elementary School	ETK	1	West	Spanish

CSPP – California State Preschool Program ETK – Expanded Transitional Kinder EEC – Early Education Center  
 PCC – Preschool Collaborative Classrooms TK – Transitional Kinder

# Dual Language Education Elementary and Secondary Program Types

L.A. Unified offers three master plan program options that fall under the dual language education umbrella. Each program reflects the community it serves: English learners of the target language, English speakers, or both.

All three program types offer content and literacy instruction in English and another language (target language of the program): Spanish, Korean, Mandarin, French, Armenian, Japanese, or Arabic. Additionally, Dual Language Education programs sustain instruction in the target language for a minimum of 50% of the day with the purpose of promoting bilingualism and biliteracy, high levels of academic achievement, and sociocultural competence.



# Language Distribution During the Instructional Day

## Elementary

Currently, in L.A. Unified, there are three dual language education elementary instructional models: 90/10, 70/30 and 50/50. The first number represents the percentage of instruction in the target language while the second number represents percentage of instruction in English when the program first starts in TK-K.



## Elementary Instructional Models

50/50 Model	70/30 Model	90/10 Model
<ul style="list-style-type: none"><li>• 50% of day in target language in kindergarten</li><li>• Remains at 50/50 throughout K-5/6</li></ul>	<ul style="list-style-type: none"><li>• 70% of day in target language in Kindergarten</li><li>• Reaches 50/50 at grade 3 and remains 50/50 through grades 4-5/6</li></ul>	<ul style="list-style-type: none"><li>• 90% of day in target language in Kindergarten</li><li>• Reaches 50/50 through grades 4-5/6</li></ul>

## Secondary

In L.A. Unified Secondary dual language programs, languages are distributed by content area. To keep close to the 50/50 elementary instructional model, a minimum of two courses are offered in target language during the instructional day at each grade level.



# Goals of Dual Language Education



## Bilingualism and Biliteracy

DLE students demonstrate content and language proficiency and use both languages to advance and make decisions about their deep thinking. They build knowledge, skills and practices using their entire linguistic repertoires.



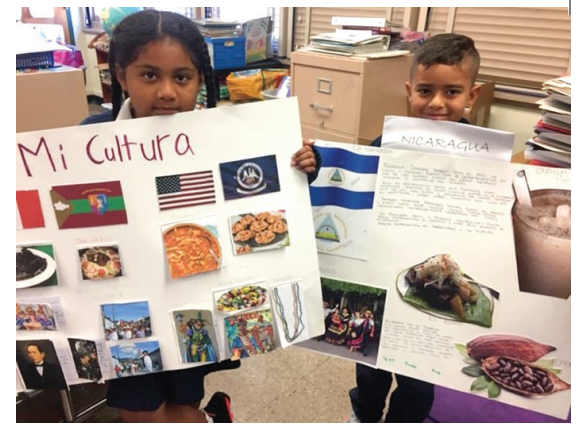
## Academic Achievement

DLE students achieve high levels of content and academic language proficiency in two languages through standards-based (including disciplinary practices) rigorous instruction, made robust through real-world investigations and inquiry. Multilingual content instruction is aligned to all three common core shifts: focus, coherence and rigor.



## Sociocultural Competence

DLE students identify as powerful bilingual thinkers. They recognize and use differences in themselves and others to create community and develop agency. They are critically aware of the self, others, and the world, and the responsibility and commitment that comes from this awareness to address issues of societal relevance.



**“ Injustice anywhere is a threat to justice everywhere. ”**  
**- Dr. Martin Luther, Jr.**



# First Dual Language Education Programs in L.A. Unified

**1991**

Grand View ES - Spanish  
First in L.A. Unified

**1992**

Cahuenga ES - Korean  
First in L.A. Unified, CA,  
and U.S.

**2007**

City Terrace ES - Mandarin  
First in L.A. Unified and SOCAL

**2015**

Richland Ave ES - French  
First in L.A. Unified

**2016**

Mountain View ES - Armenian  
First in L.A. Unified

**2016**

Elizabeth Learning Center - Arabic  
First in L.A. Unified and California

**2021**

Amestoy ES - Japanese  
First in L.A. Unified

L.A. Unified is committed to providing a multilingual pathway for students. Families can select from multiple program options beginning in early education, through elementary, into secondary. Some schools have a clearly articulated pathway, while others are still developing their pathway. As parents express interest in continuing the language pathway to secondary, new programs are established and added each year.



**TOTAL NUMBER OF TK-12 PROGRAMS IN 2021-22 = 211**

# Dual Language Education Programs

## Local District Central

BD: Board District  
CoS: Community of Schools

OWI: One-Way Immersion TWI: Two-Way Immersion WLI: World Language Immersion  
 ● Arabic ● Armenian ● French ● Japanese ● Korean ● Mandarin ● Spanish

BD	Start Year	School/Grade Level	Phone	Master Plan Program/Model	A	AR	F	J	K	M	S
2	2018	<b>20TH ST. ES - TK-4</b> 1353 E. 20th St., Los Angeles, CA 9001 Jefferson/South Central CoS	(213) 747-7151	TWI 50/50							●
2	2019	<b>28TH ST. ES - K-5</b> 2807 Stanford Ave., Los Angeles, CA 90011 Jefferson/South Central CoS	(323) 232-3496	OWI 70/30							●
5	2008	<b>ALDAMA ES - K-5</b> 632 N. Ave. 50 Los Angeles, CA 90042 Eagle Rock/Highland Pk CoS	(213) 746-1995	TWI 50/50							●
1	2004	<b>ALEXANDER SCIENCE CENTER ES - K-5</b> 3737 S. Figueroa St. Los Angeles, CA 90007 Manual Arts/Vermont Square CoS	(213) 746-1995	TWI 50/50							●
2	2019	<b>ALEXANDRIA AVE ES - K-3</b> 4211 Oakwood Ave., Los Angeles, CA 90004 Downtown/MacArthur Pk CoS	(323) 660-1936	TWI 50/50							●
5	2017	<b>ATWATER ES - K-4</b> 3271 Silver Lake Blvd., Los Angeles, CA 90039 Glassell Pk/Los Feliz CoS	(323) 665-5941	TWI 50/50							●
7	2019	<b>AURORA ES - K-2</b> 1050 E. 52nd Pl., Los Angeles, CA 90011 Jefferson/South Central CoS	(323) 238-1500	TWI 50/50							●
2	2014	<b>BERENDO MS - 6-8</b> 1157 S. Berendo St., Los Angeles, CA 90006 Koreatown/Mid-Cty CoS	(213) 739-5600	TWI							●
5	2021	<b>BUCHANAN STREET ES - K</b> 5024 Buchanan St, Los Angeles, CA 90042 Eagle Rock/Highland Pk CoS	(323) 255-7118	TWI 50/50							●
5	2019	<b>BUSHNELL WAY ES - K-3</b> 5507 Bushnell Way, Los Angeles, CA 90042 Eagle Rock/Highland Pk CoS	(323) 255-6511	TWI 90/10							●
2	1992	<b>CAHUENGA ES - TK-5</b> 220 S. Hobart Blvd., Los Angeles, CA 90004 Koreatown/Mid-Cty CoS	(213) 386-6303	TWI 50/50					●		

# Dual Language Education Programs

## Local District Central

**BD:** Board District  
**CoS:** Community of Schools

**OWI:** One-Way Immersion **TWI:** Two-Way Immersion **WLI:** World Language Immersion  
 ● Arabic ● Armenian ● French ● Japanese ● Korean ● Mandarin ● Spanish

BD	Start Year	School/Grade Level	Phone	Master Plan Program/Model	A	AR	F	J	K	M	S
2	2019	<b>CAHUENGA ES - TK-5</b> 220 S. Hobart Blvd., Los Angeles, CA 90004 Koreatown/Mid-Cty CoS	(213) 386-6303	<b>OWI</b> 50/50							●
2	2011	<b>CASTELAR STREET ES - TK-5</b> 840 Yale St., Los Angeles, CA 90012 Downtown/MacArthur Pk CoS	(213) 626-3674	<b>TWI</b> 50/50						●	
2	2019	<b>CASTELAR STREET ES - 6-8</b> 841 Yale St., Los Angeles, CA 90012 Downtown/MacArthur Pk CoS	(213) 626-3675	<b>TWI</b>						●	
5	2017	<b>FRANKLIN DL MAGNET HS - 9-12</b> 820 N. Avenue 54, Los Angeles, CA 90042 Eagle Rock/Highland Pk CoS	(323) 550-2000	<b>TWI</b>							●
5	2015	<b>FRANKLIN DL MAGNET MS - 6-8</b> 820 N. Avenue 54, Los Angeles, CA 90042 Eagle Rock/Highland Pk CoS	(323) 550-2000	<b>TWI</b>							●
2	2019	<b>GRATTS LEARNING ACAD - 1-4-OWI / K-TWI</b> 309 S. Lucas Ave., Los Angeles, CA 90017 Downtown/MacArthur Pk CoS	(213) 250-2932	<b>OWI / TWI</b> 50/50							●
5	2019	<b>HARMONY ES - K-3</b> 899 E. 42nd Pl., Los Angeles, CA 90011 Jefferson/South Central CoS	(323) 238-0791	<b>TWI</b> 50/50							●
2	2019	<b>HOBART BLVD. ES - K-2</b> 980 S. Hobart Blvd., Los Angeles, CA 90006 Koreatown/Mid-Cty CoS	(213) 386-8661	<b>TWI</b> 50/50							●
5	2017	<b>HOOPER AVE. ES - 1-5</b> 1225 E. 52nd St., Los Angeles, CA 90011 Jefferson/South Central CoS	(323) 232-3571	<b>TWI</b> 50/50							●
5	2019	<b>HOOPER AVE. PC - K</b> 1280 E. 52nd St., Los Angeles, CA 90011 Jefferson/South Central CoS	(323) 233-5866	<b>TWI</b> 70/30							●
5	2019	<b>IRVING MS - 6-8</b> 3010 Estara Ave., Los Angeles, CA 90065 Glassell Pk/Los Feliz CoS	(323) 259-3700	<b>TWI</b>							●

# Dual Language Education Programs

## Local District Central

BD: Board District  
CoS: Community of Schools

OWI: One-Way Immersion TWI: Two-Way Immersion WLI: World Language Immersion  
● Arabic ● Armenian ● French ● Japanese ● Korean ● Mandarin ● Spanish

BD	Start Year	School/Grade Level	Phone	Master Plan Program/Model	A	AR	F	J	K	M	S
2	2018	<b>KIM ES - K-5</b> 225 S. Oxford Ave., Los Angeles, CA 90004 Koreatown/Mid-Cty CoS	(213) 368-5600	OWI 50/50					●		
2	2006	<b>KIM ES - K-5</b> 225 S. Oxford Ave., Los Angeles, CA 90004 Koreatown/Mid-Cty CoS	(213) 368-5600	TWI 50/50							●
7	2021	<b>LIZARRAGA ES - K &amp; 1</b> 401 E 40th Pl, Los Angeles, CA 90011 Jefferson/South Central CoS	(323) 235-6960	TWI 50/50							
5	2011	<b>LOGAN ACAD OF GLOB ECO - TK-5</b> 1711 W. Montana St., Los Angeles, CA 90026 Downtown/MacArthur Pk CoS	(213) 413-6353	TWI 50/50							●
5	2017	<b>LOGAN ACAD OF GLOB ECO - 6-8</b> 1711 W. Montana St., Los Angeles, CA 90026 Downtown/MacArthur Pk CoS	(213) 413-6353	TWI							●
2	2011	<b>MACARTHUR PARK VPA ES - K-5</b> 2300 W. 7th St., Los Angeles, CA 90057 Downtown/MacArthur Pk CoS	(213) 381-7217	TWI 50/50							●
1	2005	<b>MACK ES - K-5</b> 3020 S. Catalina St., Los Angeles, CA 90007 Manual Arts/Vermont Square CoS	(323) 730-7620	TWI 50/50							●
2	2006	<b>MAGNOLIA ES - K-5</b> 1626 S. Orchard Ave., Los Angeles, CA 90006 Koreatown/Mid-Cty CoS	(213) 748-6281	TWI 50/50							●
2	2012	<b>MAGNOLIA ES - K-5</b> 1626 S. Orchard Ave., Los Angeles, CA 90006 Koreatown/Mid-Cty CoS	(213) 748-6281	OWI 50/50							●
7	2011	<b>MAIN STREET ES - K-5</b> 129 E. 53rd St., Los Angeles, CA 90011 Jefferson/South Central CoS	(323) 232-4856	TWI 50/50							●
2	2018	<b>MAPLE PC - K-1</b> 3601 S Maple Ave., Los Angeles, CA 90011 Jefferson/South Central CoS	(323) 232-0984	TWI 50/50							●

# Dual Language Education Programs

## Local District Central

BD: Board District  
CoS: Community of Schools

OWI: One-Way Immersion TWI: Two-Way Immersion WLI: World Language Immersion  
 ● Arabic ● Armenian ● French ● Japanese ● Korean ● Mandarin ● Spanish

BD	Start Year	School/Grade Level	Phone	Master Plan Program/Model	A	AR	F	J	K	M	S
5	2020	<b>MARSHALL HS - 9-10</b> 3939 Tracy St., Los Angeles, CA 90027 Glassell Pk/Los Feliz CoS	(323) 671-1400	TWI							●
1	2020	<b>MARTIN LUTHER KING JR. - K-2</b> 3989 Ss Hobart Blvd., Los Angeles, CA 90062 Manual Arts/Vermont Square CoS	(323) 294-0031	TWI 50/50							●
5	2015	<b>MAYBERRY ES - K-5</b> 2414 Mayberry St., Los Angeles, CA 90026 Glassell Pk/Los Feliz CoS	(213) 413-3420	TWI 50/50							●
1	2021	<b>MENLO AVE. ES - K</b> 4156 Menlo Ave, Los Angeles, CA 90037 Manual Arts/Vermont Square CoS	(323) 232-4291	TWI 50/50							●
5	2012	<b>MICHELTORENA ES - K-5</b> 1511 Micheltorena St., Los Angeles, CA 90026 Glassell Pk/Los Feliz CoS	(323) 661-2125	TWI 50/50							●
1	2002	<b>NORMANDIE AVENUE ES - K-5</b> 4505 S. Raymond Ave., Los Angeles, CA 90037 Manual Arts/Vermont Square CoS	(323) 294-5171	TWI 50/50							●
2	2013	<b>RFK COMMUNITY SCHLS ASGE - TK-5</b> 3201 W. 8th St., Los Angeles, CA 90005 Koreatown/Mid-Cty CoS	(323) 294-5171	TWI 50/50					●		
2	2013	<b>RFK COMMUNITY SCHLS ASGE - TK-5</b> 3201 W. 8th St., Los Angeles, CA 90005 Koreatown/Mid-Cty CoS	(323) 294-5171	OWI 50/50							●
2	2019	<b>RFK COMMUNITY SCHLS ASGL - 6-8</b> 3201 W. 8th St., Los Angeles, CA 90005 Koreatown/Mid-Cty CoS	(213) 480-4540	TWI					●		
2	2020	<b>RFK COMMUNITY SCHLS ASGL - 6-7</b> 3201 W. 8th St., Los Angeles, CA 90005 Koreatown/Mid-Cty CoS	(213) 480-4540	TWI							●
2	2013	<b>RFK COMMUNITY SCHLS-UCLA - TK-5</b> 700 S. Mariposa Ave., Los Angeles, CA 90005 Koreatown/Mid-Cty CoS	(213) 480-3750	OWI 70/30							●

# Dual Language Education Programs

## Local District Central

BD: Board District  
CoS: Community of Schools

OWI: One-Way Immersion TWI: Two-Way Immersion WLI: World Language Immersion  
 ● Arabic ● Armenian ● French ● Japanese ● Korean ● Mandarin ● Spanish

BD	Start Year	School/Grade Level	Phone	Master Plan Program/Model	A	AR	F	J	K	M	S
2	2019	<b>RFK COMMUNITY SCHLS-UCLA - 6-8</b> 700 S. Mariposa Ave., Los Angeles, CA 90005 Koreatown/Mid-Cty CoS	(213) 480-3750	TWI							●
5	2019	<b>RIORDAN PC - K-3</b> 5531 Monte Vista St., Los Angeles, CA 90042 Eagle Rock/Highland Pk CoS	(323) 551-6822	TWI 50/50			●				
2	2018	<b>ROYBAL LC HS - 9-12</b> 1200 W. Colton St., Los Angeles, CA 90026 Downtown/MacArthur Pk CoS	(213) 580-6400	TWI							●
2	2020	<b>TRINITY ST. ES - 2-3</b> 3736 Trinity St., Los Angeles, CA 90011 Jefferson/South Central CoS	(323) 232-2358	TWI 50/50							●



# Dual Language Education Programs

## Local District East

BD: Board District

CoS: Community of Schools

OWI: One-Way Immersion TWI: Two-Way Immersion WLI: World Language Immersion

● Arabic ● Armenian ● French ● Japanese ● Korean ● Mandarin ● Spanish

BD	Start Year	School/Grade Level	Phone	Master Plan Program/Model	A	AR	F	J	K	M	S
2	2017	<b>2ND ST. ES - K-4</b> 1942 E. 2nd St., Los Angeles, CA 90033 Boyle Heights CoS	(323) 269-9401	TWI 50/50							●
2	2020	<b>4TH ST. PC - K-1</b> 469 Amalia Ave., Los Angeles, CA 90022 East Los Angeles CoS	(323) 268-8775	TWI 50/50							●
2	2021	<b>4TH STREET ES - 2</b> 420 Amalia Ave, Los Angeles, CA 90022 East Los Angeles CoS	(323) 266-0182	TWI 50/50							●
2	2019	<b>ANTON ES - K-2</b> 831 N. Bonnie Beach Pl., Los Angeles, CA 90063 East Los Angeles CoS	(323) 981-3640	TWI 50/50							●
5	2007	<b>CITY TERRACE ES - K-5</b> 4350 City Terrace Dr., Los Angeles, CA 90063 Lincoln Heights/El Sereno CoS	(323) 269-0581	TWI 50/50						●	
5	2018	<b>EASTMAN ES - TK-4</b> 4112 E. Olympic Blvd., Los Angeles, CA 90023 East Los Angeles CoS	(323) 269-0456	TWI 90/10							●
5	2018	<b>EASTMAN ES - 5</b> 4112 E. Olympic Blvd., Los Angeles, CA 90023 East Los Angeles CoS	(323) 269-0456	OWI 70/30							●
2	2013	<b>EL SERENO MS - 6-8</b> 2839 N. Eastern Ave., Los Angeles, CA 90032 Lincoln Heights/El Sereno CoS	(323) 224-4700	TWI						●	
2	2011	<b>EL SERENO MS - 6-8</b> 2839 N. Eastern Ave., Los Angeles, CA 90032 Lincoln Heights/El Sereno CoS	(323) 224-4700	TWI							●
5	2016	<b>ELIZABETH LC - K-5</b> 4811 Elizabeth St., Cudahy, CA 90201 Bell/Cudahy/Maywood CoS	(323) 271-3600	TWI 50/50	●						
2	2013	<b>EUCLID AVE. ES - K-5</b> 806 S. Euclid Ave., Los Angeles, CA 90023 Boyle Heights CoS	(323) 263-6792	TWI 50/50							●

# Dual Language Education Programs

## Local District East

BD: Board District  
CoS: Community of Schools

OWI: One-Way Immersion TWI: Two-Way Immersion WLI: World Language Immersion  
● Arabic ● Armenian ● French ● Japanese ● Korean ● Mandarin ● Spanish

BD	Start Year	School/Grade Level	Phone	Master Plan Program/Model	A	AR	F	J	K	M	S
2	2005	<b>FARMDALE ES - K-5</b> 2660 Ruth Swiggett Dr., Los Angeles, CA 90032 Lincoln Heights/El Sereno CoS	(323) 222-6659	TWI 50/50							●
5	2018	<b>FISHBURN AVE. ES - TK-4</b> 5701 Fishburn Ave., Maywood, CA 90270 Bell/Cudahy/Maywood CoS	(323) 560-0878	TWI 50/50							●
7	2005	<b>FLORENCE AVE. ES - TK-6</b> 7211 Bell Ave., Los Angeles, CA 90001 Huntington Pk/Vernon/Walnut Pk CoS	(323) 582-0758	TWI 50/50							●
5	2006	<b>FORD BLVD. ES - TK-5</b> 1112 S. Ford Blvd., Los Angeles, CA 90022 East Los Angeles CoS	(323) 268-8508	TWI 50/50							●
5	2017	<b>GAGE MS - 6-8</b> 2880 Gage Ave., Huntington Park, CA 90255 Lincoln Heights/El Sereno CoS	(323) 826-1500	TWI							●
2	2005	<b>GATES ST. ES - K-5</b> 3333 Manitou Ave., Los Angeles, CA 90031 Lincoln Heights/El Sereno CoS	(323) 225-9574	TWI 50/50							●
2	2020	<b>GATES ST. ES - K-1</b> 3334 Manitou Ave., Los Angeles, CA 90031 Lincoln Heights/El Sereno CoS	(323) 225-9575	TWI 50/50						●	
2	2012	<b>GRIFFITH MS - 6-8</b> 4765 E. Fourth St., Los Angeles, CA 90022 East Los Angeles CoS	(323) 266-7400	TWI							●
2	2019	<b>HARRISON ST. ES - K-3</b> 3529 City Terrace Dr., Los Angeles, CA 90063 Lincoln Heights/El Sereno CoS	(323) 263-9191	TWI 50/50							●
2	2018	<b>HUMPHREYS ES - K-4</b> 500 S. Humphreys Ave., Los Angeles, CA 90022 East Los Angeles CoS	(323) 263-6958	TWI 50/50							●
2	2003	<b>HUNTINGTON DR. ES - K-6</b> 4435 Huntington Dr., Los Angeles, CA 90032 Lincoln Heights/El Sereno CoS	(323) 223-1336	TWI 50/50							●



# Dual Language Education Programs

## Local District East

**BD:** Board District  
**CoS:** Community of Schools

**OWI:** One-Way Immersion **TWI:** Two-Way Immersion **WLI:** World Language Immersion  
 ● Arabic ● Armenian ● French ● Japanese ● Korean ● Mandarin ● Spanish

BD	Start Year	School/Grade Level	Phone	Master Plan Program/Model	A	AR	F	J	K	M	S
5	2018	<b>HUNTINGTON PARK ES - TK-4</b> 6055 Corona Ave., Huntington Park, CA 90255 Huntington Pk/Vernon/Walnut Pk CoS	(323) 869-5920	<b>TWI</b> 50/50							●
5	2018	<b>INDEPENDENCE ES - K-3</b> 8435 Victoria Ave., South Gate, CA 90280 South Gate CoS	(323) 221-5148	<b>TWI</b> 50/50							●
2	2018	<b>LATONA ES - K-3</b> 4312 Berenice Ave., Los Angeles, CA 90031 Lincoln Heights/El Sereno CoS	(323) 221-5148	<b>TWI</b> 50/50							●
5	2019	<b>LEGACY STEAM HS - 10-11</b> 5225 Tweedy Blvd., South Gate, CA 90280 South Gate CoS	(323) 357-7540	<b>TWI</b>							●
2	2020	<b>LINCOLN HS - 9-10</b> 3501 N. Broadway, Los Angeles, CA 90031 Lincoln Heights/El Sereno CoS	(323) 441-4600	<b>TWI</b>						●	
2	2020	<b>LINCOLN HS - 9-10</b> 3501 N. Broadway, Los Angeles, CA 90031 Lincoln Heights/El Sereno CoS	(323) 441-4600	<b>TWI</b>							●
5	2019	<b>LOMA VISTA ES - K-2</b> 3629 E. 58th St., Maywood, CA 90270 Bell/Cudahy/Maywood CoS	(323) 582-6153	<b>TWI</b> 50/50							●
5	2019	<b>LORENA ST. ES - K-2</b> 1015 S. Lorena St., Los Angeles, CA 90023 Boyle Heights CoS	(323) 268-1128	<b>TWI</b> 50/50							●
5	2004	<b>LORETO ST. ES - K-5</b> 3408 Arroyo Seco Ave., Los Angeles, CA 90065 Lincoln Heights/El Sereno CoS	(323) 222-5176	<b>TWI</b> 50/50							●
5	2014	<b>MADISON ES - K-5</b> 9820 Madison Ave., South Gate, CA 90280 South Gate CoS	(323) 568-3900	<b>TWI</b> 50/50							●
2	2019	<b>MARIANNA AVE. ES - K-2</b> 4215 E. Gleason St., Los Angeles, CA 90063 East Los Angeles CoS	(323) 262-6382	<b>TWI</b> 50/50							●

# Dual Language Education Programs

## Local District East

BD: Board District  
CoS: Community of Schools

OWI: One-Way Immersion TWI: Two-Way Immersion WLI: World Language Immersion  
● Arabic ● Armenian ● French ● Japanese ● Korean ● Mandarin ● Spanish

BD	Start Year	School/Grade Level	Phone	Master Plan Program/Model	A	AR	F	J	K	M	S
5	2011	<b>MILES ES - K-5</b> 6720 Miles Ave., Huntington Park, CA 90255 Huntington Pk/Vernon/Walnut Pk CoS	(323) 588-8296	TWI 50/50							●
5	2003	<b>MONTARA ES - K-6</b> 10018 Montara Ave., South Gate, CA 90280 South Gate CoS	(323) 567-1451	TWI 50/50							●
5	2017	<b>NIGHTINGALE MS - 6-8</b> 3311 N. Figueroa St., Los Angeles, CA 90065 Lincoln Heights/El Sereno CoS	(323) 224-4800	TWI						●	
5	2020	<b>NIGHTINGALE MS - 6-7</b> 3312 N. Figueroa St., Los Angeles, CA 90065 Lincoln Heights/El Sereno CoS	(323) 224-4800	TWI							●
5	2004	<b>OCHOA LC ES - TK-5</b> 5027 Live Oak St., Cudahy, CA 90201 Bell/Cudahy/Maywood CoS	(323) 869-1300	TWI 70/30							●
5	2010	<b>OCHOA LC MS - 6-8</b> 5027 Live Oak St., Cudahy, CA 90201 Bell/Cudahy/Maywood CoS	(323) 869-1300	TWI							●
5	2021	<b>OCHARD ACADEMIES 2C MS - 6</b> 6411 Orchard Ave, Bell, CA 90201 Bell/Cudahy/Maywood CoS	(323) 826-3900	TWI							●
5	2020	<b>PACIFIC BLVD. ES - K-1</b> 2660 East 57th St., Huntington Park, CA 90255 Huntington Pk/Vernon/Walnut Pk CoS	(323) 586-8640	TWI 50/50							●
5	2019	<b>PARK AVE. ES - K-2</b> 8020 Park Ave., Cudahy, CA 90201 Bell/Cudahy/Maywood CoS	(323) 832-1860	TWI 50/50							●
2	2020	<b>ROWAN AVE. ES - K-1</b> 600 South Rowan Ave., Los Angeles, CA 90023 East Los Angeles CoS	(323) 826-1650	TWI 50/50							●
5	2013	<b>ROYBAL-ALLARD ES - K-6</b> 3232 Saturn Ave., Huntington Park, CA 90255 Huntington Pk/Vernon/Walnut Pk CoS	(323) 826-1650	TWI 50/50							●

# Dual Language Education Programs

## Local District East

BD: Board District

CoS: Community of Schools

OWI: One-Way Immersion TWI: Two-Way Immersion WLI: World Language Immersion

● Arabic ● Armenian ● French ● Japanese ● Korean ● Mandarin ● Spanish

BD	Start Year	School/Grade Level	Phone	Master Plan Program/Model	A	AR	F	J	K	M	S
5	2019	<b>SAN GABRIEL AVE. ES - K-3</b> 8628 San Gabriel Ave., South Gate, CA 90280 South Gate CoS	(323) 567-1488	TWI 50/50							●
5	2019	<b>SAN MIGUEL ES - K-2</b> 9801 San Miguel Ave., South Gate, CA 90280 South Gate CoS	(323) 567-0511	WLI 50/50						●	
5	2018	<b>SAN MIGUEL ES - TK-3</b> 9801 San Miguel Ave., South Gate, CA 90280 South Gate CoS	(323) 567-0511	TWI 50/50							●
2	2018	<b>SHERIDAN ES - K-3</b> 416 N. Cornwell St., Los Angeles, CA 90033 Boyle Heights CoS	(323) 263-9818	TWI 50/50							●
5	2019	<b>SOUTH GATE MS - 6-8</b> 4100 Firestone Blvd., South Gate, CA 90280 South Gate CoS	(323) 568-4000	TWI							●
5	2020	<b>STANFORD AVE. ES - 1-2</b> 2833 Illinois Ave., South Gate, CA 90280 South Gate CoS	(323) 569-8117	TWI 50/50							●
5	2019	<b>STANFORD AVE. PC - TK-K</b> 3020 Kansas Ave., South Gate, CA 90280 South Gate CoS	(323) 563-9208	TWI 50/50							●
5	2018	<b>STATE ST. ES - K-3</b> 3211 Santa Ana St., South Gate, CA 90280 South Gate CoS	(323) 582-7358	TWI 50/50							●
2	2019	<b>STEVENSON MS - 6-8</b> 725 S. Indiana St., Los Angeles, CA 90023 Boyle Heights CoS	(323) 780-6400	TWI							●
2	2018	<b>SUNRISE ES - K-4</b> 2821 E.7th St., Los Angeles, CA 90023 Boyle Heights CoS	(323) 263-6744	TWI 50/50							●
5	2019	<b>TWEEDY ES - K-2</b> 9724 Pinehurst Ave., South Gate, CA 90280 South Gate CoS	(323) 568-2828	TWI 50/50							●

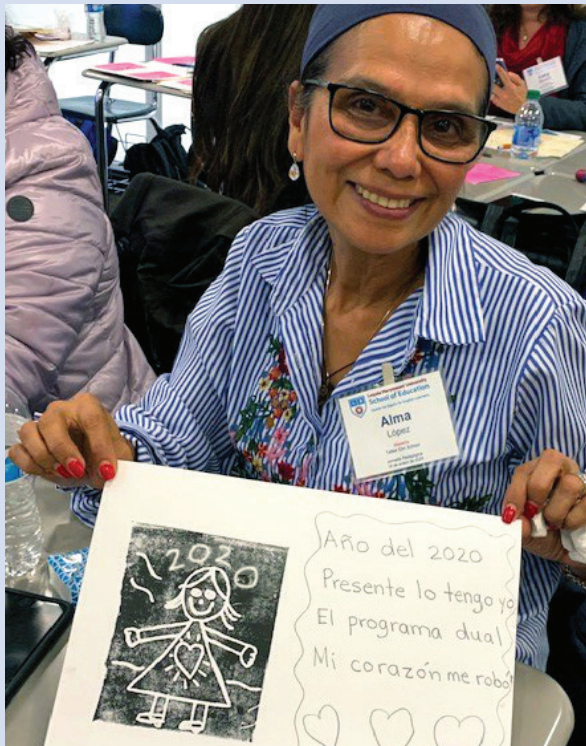
# Dual Language Education Programs

## Local District East

BD: Board District  
CoS: Community of Schools

OWI: One-Way Immersion TWI: Two-Way Immersion WLI: World Language Immersion  
● Arabic ● Armenian ● French ● Japanese ● Korean ● Mandarin ● Spanish

BD	Start Year	School/Grade Level	Phone	Master Plan Program/Model	A	AR	F	J	K	M	S
5	2017	WALNUT PARK ES - K-4 2642 Olive St., Huntington Park, CA 90255 Huntington Pk/Vernon/Walnut Pk CoS	(323) 588-3145	TWI 50/50							●
5	2013	WILLOW ES - K-5 2777 Willow Pl., South Gate, CA 90280 South Gate CoS	(323) 568-5760	TWI 50/50							●
5	2011	WOODLAWN ES - TK-5 6314 Woodlawn Ave., Bell, CA 90201 Bell/Cudahy/Maywood CoS	(323) 560-1445	TWI 90/10							●



# Dual Language Education Programs

## Local District Northeast

BD: Board District  
CoS: Community of Schools

OWI: One-Way Immersion TWI: Two-Way Immersion WLI: World Language Immersion  
● Arabic ● Armenian ● French ● Japanese ● Korean ● Mandarin ● Spanish

BD	Start Year	School/Grade Level	Phone	Master Plan Program/Model	A	AR	F	J	K	M	S
6	2019	<b>CAMELLIA AVE. ES - K-2</b> 7451 Camellia Ave., N. Hollywood, CA 91605 NoHo/Valley Village CoS	(818) 765-5255	TWI 50/50							●
3	2019	<b>COLDWATER CANYON ES - K-2</b> 6850 Coldwater Cyn. Ave., N. Hollywood, CA 91605 Van Nuys/Valley Glen CoS	(818) 765-6634	TWI 50/50							●
6	2018	<b>FERNANGELES ES - 4-5</b> 12001 Art St., Sun Valley, CA 91352 Sun Valley CoS	(818) 767-0380	OWI 50/50							●
6	2018	<b>FERNANGELES ES - K-3</b> 12001 Art St., Sun Valley, CA 91352 Sun Valley CoS	(818) 767-0380	TWI 50/50							●
6	2010	<b>GRIDLEY ES - K-5</b> 1907 Eighth St., San Fernando, CA 91340 San Fernando/Sylmar CoS	(818) 361-1243	TWI 50/50							●
6	2018	<b>HAZELTINE ES - K-3</b> 7150 Hazeltine Ave., Van Nuys, CA 91405 Van Nuys/Valley Glen CoS	(818) 781-1040	TWI 50/50							●
3	2018	<b>KITTRIDGE ST. ES - K-3</b> 13619 Kittridge St., Van Nuys, CA 91401 Van Nuys/Valley Glen CoS	(818) 786-7926	TWI 50/50							●
3	2018	<b>KITTRIDGE ST. ES - K-3</b> 13619 Kittridge St., Van Nuys, CA 91401 Van Nuys/Valley Glen CoS	(818) 786-7926	TWI 50/50		●					
3	2021	<b>MADISON MS - 6</b> 13000 Hart St, North Hollywood, CA 91605 Van Nuys/Valley Glen CoS	(818) 255-5200	OWI		●					
6	2016	<b>MOUNTAIN VIEW ES - TK-5</b> 6410 Olcott St., Tujunga, CA 91042 Sunland/Tujunga CoS	(818) 352-1616	TWI 50/50		●					
6	2019	<b>RANCHITO AVE. ES - K-2</b> 7940 Ranchito Ave., Panorama City, CA 91402 Panorama City CoS	(818) 988-1710	TWI 50/50							●

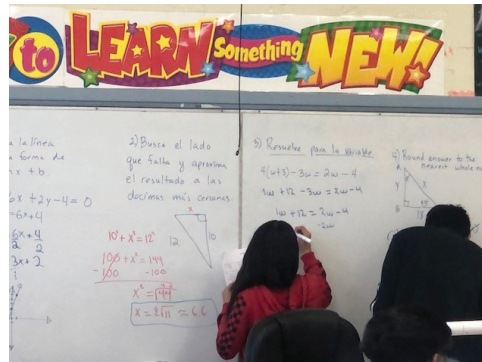
# Dual Language Education Programs

## Local District Northeast

BD: Board District  
CoS: Community of Schools

OWI: One-Way Immersion TWI: Two-Way Immersion WLI: World Language Immersion  
● Arabic ● Armenian ● French ● Japanese ● Korean ● Mandarin ● Spanish

BD	Start Year	School/Grade Level	Phone	Master Plan Program/Model	A	AR	F	J	K	M	S
6	2018	<b>ROSCOE ES - K-3</b> 10765 Strathern St., Sun Valley, CA 91352 Sun Valley CoS	(818) 767-3018	TWI 50/50							●
6	2013	<b>SAN FERNANDO ES - K-5</b> 1130 Mott St., San Fernando, CA 91340 San Fernando/Sylmar CoS	(818) 365-3201	TWI 50/50							●
6	2019	<b>SAN FERNANDO HS - 9-11</b> 11133 O'Melvan Ave., San Fernando, CA 91340 San Fernando/Sylmar CoS	(818) 898-7600	TWI							●
6	2016	<b>SAN FERNANDO MS - 6-8</b> 130 N. Brand Blvd., San Fernando, CA 91340 San Fernando/Sylmar CoS	(818) 837-5400	TWI							●
6	2017	<b>SATICOY ES - K-4</b> 7850 Ethel Ave., N. Hollywood, CA 91605 Sun Valley CoS	(818) 765-0783	TWI 50/50		●					
6	2018	<b>TELFAIR AVE. ES - K-3</b> 10975 Telfair Ave., Pacoima, CA 91331 San Fernando/Sylmar CoS	(818) 896-7411	TWI 50/50							●
6	2011	<b>VISTA DEL VALLE ACADEMY ES - TK-5</b> 12441 Bromont Ave., San Fernando, CA 91340 San Fernando/Sylmar CoS	(818) 838-3860	TWI 50/50							●



# Dual Language Education Programs

## Local District Northwest

**BD:** Board District  
**CoS:** Community of Schools

**OWI:** One-Way Immersion **TWI:** Two-Way Immersion **WLI:** World Language Immersion  
 ● Arabic ● Armenian ● French ● Japanese ● Korean ● Mandarin ● Spanish

BD	Start Year	School/Grade Level	Phone	Master Plan Program/Model	A	AR	F	J	K	M	S
3	2021	<b>BASSETT ST. ES - K</b> 15756 Bassett St., Lake Balboa, CA 91406 Reseda CoS	(818) 782-1340	TWI 50/50							●
6	2018	<b>COHASSET ES - K-5</b> 15810 Saticoy St., Lake Balboa, CA 91406 Monroe CoS	(818) 787-2113	OWI 70/30							●
4	2019	<b>FULLBRIGHT AVE. ES - K-2</b> 6940 Fullbright Ave., Winnetka, CA 91306 Cleveland CoS	(818) 340-6677	TWI 50/50							●
6	2019	<b>LASSEN ES - K-2</b> 15017 Superior St., North Hills, CA 91343 Monroe CoS	(818) 892-8618	TWI 50/50							●
3	2018	<b>LIMERICK AVE. ES - K-3</b> 8530 Limerick Ave., Winnetka, CA 91306 Cleveland CoS	(818) 341-1730	TWI 50/50							●
3	2020	<b>MULHOLLAND MS - 6-7</b> 17120 Vanowen St., Lake Balboa, CA 91406 Reseda CoS	(818) 609-2500	TWI							●
3	2021	<b>MULHOLLAND MS - 6</b> 17120 Vanowen St., Lake Balboa, CA 91406 Reseda CoS	(818) 609-2500	OWI							●
3	2018	<b>NAPA ST. ES - TK-3</b> 19010 Napa St., Northridge, CA 91324 Cleveland CoS	(818) 885-1441	TWI 50/50							●
3	2018	<b>NEVADA AVE. ES - TK-4</b> 22120 Chase St., West Hills, CA 91304 Canoga Pk/Chatsworth CoS	(818) 348-2169	TWI 50/50							●
3	2011	<b>PORTER RANCH SCHOOL ES - K-5</b> 12450 Mason Ave., Porter Ranch, CA 91326 Canoga Pk/Chatsworth CoS	(818) 709-7100	TWI 50/50					●		

“To know another language is to have a second soul.”  
 - Charlemagne

# Dual Language Education Programs

## Local District Northwest

BD: Board District  
CoS: Community of Schools

OWI: One-Way Immersion TWI: Two-Way Immersion WLI: World Language Immersion  
 ● Arabic ● Armenian ● French ● Japanese ● Korean ● Mandarin ● Spanish

BD	Start Year	School/Grade Level	Phone	Master Plan Program/Model	A	AR	F	J	K	M	S
6	2018	<b>RESEDA HS - 9-12</b> 18230 Kittridge St., Reseda, CA 91335 Reseda CoS	(818) 758-3600	OWI							●
6	2020	<b>RESEDA HS - 6-7</b> 18230 Kittridge St., Reseda, CA 91335 Reseda CoS	(818) 758-3600	OWI							●
6	2013	<b>SANTANA ARTS ACADEMY ES - TK-5</b> 9301 Columbus Ave., North Hills, CA 91343 Monroe CoS	(818) 920-4060	TWI 50/50							●
6	2019	<b>SEPULVEDA MS - 6-8</b> 15330 Plummer St., North Hills, CA 91343 Monroe CoS	(818) 920-2130	TWI							●
3	2019	<b>SUNNY BRAE AVE. ES - K-2</b> 20620 Arminta St., Winnetka, CA 91306 Cleveland CoS	(818) 341-0931	TWI 50/50							●

“ Language is a city to the building of which every human being brought a stone. ”  
 - Ralph Waldo Emerson



# Dual Language Education Programs

## Local District South

BD: Board District  
CoS: Community of Schools

OWI: One-Way Immersion TWI: Two-Way Immersion WLI: World Language Immersion  
● Arabic ● Armenian ● French ● Japanese ● Korean ● Mandarin ● Spanish

BD	Start Year	School/Grade Level	Phone	Master Plan Program/Model	A	AR	F	J	K	M	S
7	2018	<b>116TH ST. ES - K-3</b> 11610 Stanford Ave., Los Angeles, CA 90059 Achievement Network	(323) 754-3121	TWI 50/50							●
7	2018	<b>118 ST. ES - K-3</b> 144 E.118th St., Los Angeles, CA 90061 Fremont CoS	(323) 757-1717	TWI 50/50							●
7	2018	<b>122ND ST. ES - K-3</b> 405 E.122nd St., Los Angeles, CA 90061 Achievement Network	(323) 757-8117	TWI 50/50							●
1	2018	<b>135TH ST. ES - K-3</b> 801 W. 135th St., Gardena, CA 90247 Gardena CoS	(310) 324-4454	TWI 50/50							●
7	2017	<b>153RD ST. ES - K-4</b> 1605 W 153rd St., Gardena, CA 90247 Gardena CoS	(310) 323-1029	TWI 50/50							●
7	2007	<b>75TH ST. ES - K-6</b> 142 W. 75th St., Los Angeles, CA 90003 Fremont CoS	(323) 971-8885	TWI 50/50							●
7	2017	<b>93RD ST. ES - K-4</b> 330 93rd St., Los Angeles, CA 90003 Fremont CoS	(323) 754-2869	TWI 50/50							●
7	2018	<b>96TH ST. ES - K-3</b> 1471 E.96th St., Los Angeles, CA 90002 Achievement Network	(323) 567-8871	TWI 50/50							●
7	2017	<b>AMBLER ES - K-4</b> 319 E. Sherman Dr., Carson, CA 90746 Carson CoS	(310) 532-4090	TWI 50/50							●
7	2021	<b>AMESTOY ES - K</b> 1048 W 149th St, Gardena, CA 90247 Gardena CoS	(310) 327-5592	TWI 50/50				●			
7	2011	<b>BACA ARTS ACADEMY - K-6</b> 1536 E. 89th St., Los Angeles, CA 90002 Rivera CoS	(323) 826-3560	TWI 50/50							●

# Dual Language Education Programs

## Local District South

BD: Board District  
CoS: Community of Schools

OWI: One-Way Immersion TWI: Two-Way Immersion WLI: World Language Immersion  
● Arabic ● Armenian ● French ● Japanese ● Korean ● Mandarin ● Spanish

BD	Start Year	School/Grade Level	Phone	Master Plan Program/Model	A	AR	F	J	K	M	S
7	2020	<b>BANDINI ES - K-1</b> 425 N Bandini St., San Pedro, CA 90731 San Pedro CoS	(310) 832-4593	TWI 50/50							●
1	2017	<b>BARRETT ES - K-4</b> 419 W. 98th St., Los Angeles, CA 90003 Fremont CoS	(323) 756-1419	TWI 50/50							●
7	2018	<b>BETHUNE MS - 7-8</b> 155 W. 69th St., Los Angeles, CA 90003 Fremont CoS	(323) 541-1800	TWI							●
7	2018	<b>BROAD ES - K-3</b> 24815 Broad Ave., Wilmington, CA 90744 Wilmington CoS	(310) 835-3118	TWI 50/50							●
7	2018	<b>CATSKILL AVENUE ES - K-3</b> 23536 Catskill Ave, Carson, CA 90745 Carson CoS	(310) 834-7241	TWI 50/50							●
7	2018	<b>CHAPMAN ES - K-3</b> 1947 Marine Ave., Gardena, CA 90249 Gardena CoS	(310) 324-2275	TWI 50/50						●	
7	1993	<b>DENKER AVE ES - K-5</b> 1620 W. 162nd St., Gardena, CA 90247 Gardena CoS	(310) 327-9420	TWI 50/50					●		
7	2018	<b>DOMINGUEZ ES - K-4</b> 21250 S Santa Fe Ave., Carson, CA 90810 Carson CoS	(310) 835-7137	TWI 50/50							●
7	2018	<b>DREW MS - 7-8</b> 8511 Compton Ave., Los Angeles, CA 90001 Rivera CoS	(323) 826-1700	TWI							●
7	2016	<b>EDISON MS - 7-8</b> 6500 Hooper Ave., Los Angeles, CA 90001 Rivera CoS	(323) 826-2500	TWI							●
7	2021	<b>FLOURNOY ES - K</b> 1630 E 111th St, Los Angeles, CA 90059 Achievement Network	(323) 564-2545	TWI 50/50							●

# Dual Language Education Programs

## Local District South

**BD:** Board District  
**CoS:** Community of Schools

**OWI:** One-Way Immersion **TWI:** Two-Way Immersion **WLI:** World Language Immersion  
 ● Arabic ● Armenian ● French ● Japanese ● Korean ● Mandarin ● Spanish

BD	Start Year	School/Grade Level	Phone	Master Plan Program/Model	A	AR	F	J	K	M	S
7	2019	<b>FREMONT HS - 9-11</b> 7676 S. San Pedro St., Los Angeles, CA 90003 Fremont CoS	(323) 565-1200	TWI							●
7	2016	<b>GARDENA ES - K-5</b> 647 W. Gardena Blvd., Gardena, CA 90247 Gardena CoS	(310) 324-6967	TWI 50/50							●
7	2018	<b>GOMPERS MS - 6-8</b> 234 E. 112th St., Los Angeles, CA 90061 Achievement Network	(323) 241-4000	OWI							●
7	2018	<b>GRAHAM ES - K-3</b> 8407 S. Fir Ave., Los Angeles, CA 90001 Rivera CoS	(323) 583-1263	TWI 50/50							●
7	2018	<b>KNOX ES - K-3</b> 8919 S. Main St., Los Angeles, CA 90003 Achievement Network	(323) 565-2960	TWI 50/50							●
7	2001	<b>MEYLER ST. ES - K-5</b> 1123 W. 223rd St., Torrance, CA 90502 Harbr City/Lomta CoS	(310) 328-3910	TWI 70/30							●
7	2016	<b>MIRAMONTE ES - K-5</b> 1400 E. 68th St., Los Angeles, CA 90001 Rivera CoS	(323) 583-1257	TWI 50/50							●
7	2019	<b>NARBONNE HS - 9-11</b> 24300 S. Western Ave., Harbor City, CA 90710 Harbr City/Lomta CoS	(310) 257-7100	TWI							●
7	2018	<b>NORMONT ES - K-3</b> 1001 W. 253rd St., Harbor City, CA 90710 Harbr City/Lomta CoS	(310) 326-5261	TWI 50/50							●
7	2016	<b>PARMELEE AVE. ES - K-5</b> 1338 E. 76th Pl., Los Angeles, CA 90001 Rivera CoS	(323) 587-4235	TWI 50/50							●
7	2016	<b>PRESIDENT AVE. ES - K-5</b> 1465 W. 243rd St., Harbor City, CA 90710 Harbr City/Lomta CoS	(310) 326-7400	TWI 50/50							●

# Dual Language Education Programs

## Local District South

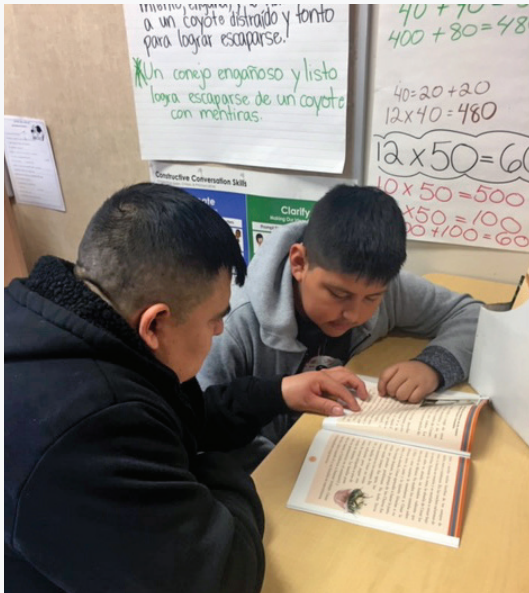
BD: Board District

CoS: Community of Schools

OWI: One-Way Immersion TWI: Two-Way Immersion WLI: World Language Immersion

● Arabic ● Armenian ● French ● Japanese ● Korean ● Mandarin ● Spanish

BD	Start Year	School/Grade Level	Phone	Master Plan Program/Model	A	AR	F	J	K	M	S
7	2018	<b>SOUTH PARK ES - K-3</b> 8510 Towne Ave., Los Angeles, CA 90003 Fremont CoS	(323) 753-4591	TWI 50/50							●
1	2018	<b>WASHINGTON PC - K-2</b> 860 W. 112th St., Los Angeles, CA 90044 Fremont CoS	(323) 779-7550	TWI 50/50							●
7	2016	<b>WHITE MS - 6-8</b> 22102 S. Figueroa St., Carson, CA 90745 Carson CoS	(310) 783-4900	TWI							●



# Dual Language Education Programs

## Local District West

BD: Board District

CoS: Community of Schools

OWI: One-Way Immersion TWI: Two-Way Immersion WLI: World Language Immersion

● Arabic ● Armenian ● French ● Japanese ● Korean ● Mandarin ● Spanish

BD	Start Year	School/Grade Level	Phone	Master Plan Program/Model	A	AR	F	J	K	M	S
1	2001	<b>3RD ST. ES - K-5</b> 201 S. June St., Los Angeles, CA 90004 Fairfax CoS	(323) 939-8337	TWI 50/50					●		
1	2019	<b>42ND ST. ES - K-2</b> 4231 4th Ave., Los Angeles, CA 90008 HEET (C/D) CoS	(323) 296-7550	WLI 50/50							●
1	2018	<b>61ST ST. ES - K-3</b> 6020 S.Figueora St., Los Angeles, CA 90003 South Mid-City CoS	(323) 759-1138	TWI 70/30							●
1	2018	<b>6TH AVE. ES - TK-4</b> 3109 6th Ave., Los Angeles, CA 90018 LA Mid-City CoS	(323) 733-9107	TWI 90/10							●
1	2017	<b>ALTA LOMA ES - K-4</b> 1745 Vineyard Ave., Los Angeles, CA 90019 LA Mid-City CoS	(323) 939-2113	TWI 70/30							●
1	2019	<b>ARLINGTON HEIGHTS ES - K-2</b> 1717 7th Ave., Los Angeles, CA 90019 LA Mid-City CoS	(323) 735-1021	TWI 50/50							●
4	2016	<b>BRADDOCK DR. ES - K-5</b> 4711 Inglewood Blvd., Culver City, CA 90230 Venice CoS	(310) 391-6707	TWI 50/50						●	
4	2013	<b>BROADWAY ES - K-5</b> 1015 Lincoln Blvd., Venice, CA 90291 Venice CoS	(310) 392-4944	TWI 50/50							●
4	2010	<b>BROADWAY ES - K-5</b> 1015 Lincoln Blvd., Venice, CA 90291 Venice CoS	(310) 392-4944	TWI 50/50						●	
1	2012	<b>BURROUGHS MS - 6-8</b> 600 S. McCadden Pl., Los Angeles, CA 90005 Fairfax CoS	(323) 549-5000	TWI							●
1	1998	<b>BURROUGHS MS - 6-8</b> 600 S. McCadden Pl., Los Angeles, CA 90005 Fairfax CoS	(323) 549-5000	TWI					●		

# Dual Language Education Programs

## Local District West

BD: Board District

CoS: Community of Schools

OWI: One-Way Immersion TWI: Two-Way Immersion WLI: World Language Immersion

● Arabic ● Armenian ● French ● Japanese ● Korean ● Mandarin ● Spanish

BD	Start Year	School/Grade Level	Phone	Master Plan Program/Model	A	AR	F	J	K	M	S
1	2019	<b>CARSON-GORE ACADEMY ES - K-2</b> 3200 W. Washington Blvd., Los Angeles, CA 90018 LA Mid-City CoS	(323) 766-5500	TWI							●
1	2018	<b>CASTLE HEIGHTS ES - K-4</b> 9755 Cattaraugus Ave., Los Angeles, CA 90034 Hamilton CoS	(310) 839-4528	WLI 90/10							●
1	2017	<b>CIENEGA ES - K-4</b> 2611 S. Orange Dr., Los Angeles, CA 90016 LA Mid-City CoS	(323) 939-1138	TWI 50/50							●
1	2021	<b>COCHRAN MS - 6</b> 4066 Johnnie Cochran Vista, LA, CA 90019 LA Mid-City CoS	(323) 730-4300	TWI							●
4	2017	<b>COWAN ES - TK-4</b> 7615 Cowan Ave., Los Angeles, CA 90045 Westchester CoS	(310) 645-1973	WLI 70/30							●
4	2001	<b>FAIRFAX HS - 9-12</b> 7850 Melrose Ave., Los Angeles, CA 90046 Fairfax CoS	(323) 370-1200	TWI					●		
4	1991	<b>GRAND VIEW ES - TK-5</b> 3951 Grand View Blvd., Los Angeles, CA 90066 Venice CoS	(310) 390-3618	TWI 90/10							●
5	2019	<b>GRANT ES - K-3</b> 1530 N. Wilton Pl., Los Angeles, CA 90028 Hollywood CoS	(323) 469-4046	TWI 50/50		●					
2	2019	<b>HARVARD ES - K-2</b> 330 N. Harvard Blvd., Los Angeles, CA 90004 Hollywood CoS	(323) 953-4540	TWI 90/10							●
1	2002	<b>HILLCREST DRIVE ES - K-5</b> 4041 Hillcrest Dr., Los Angeles, CA 90008 South Mid-City CoS	(323) 296-6867	TWI 70/30							●
5	2005	<b>KINGSLEY ES - TK-5</b> 5200 W. Virginia Ave., Los Angeles, CA 90029 Hollywood CoS	(323) 644-7700	TWI 50/50							●

# Dual Language Education Programs

## Local District West

BD: Board District

CoS: Community of Schools

OWI: One-Way Immersion TWI: Two-Way Immersion WLI: World Language Immersion

● Arabic ● Armenian ● French ● Japanese ● Korean ● Mandarin ● Spanish

BD	Start Year	School/Grade Level	Phone	Master Plan Program/Model	A	AR	F	J	K	M	S
1	2018	<b>LA SALLE AVE. ES - K-3</b> 8715 S. La Salle Ave., Los Angeles, CA 90047 HEET (W) CoS	(323) 759-1161	TWI 50/50							●
4	2020	<b>LE CONTE MS - 6-7</b> 1316 North Bronson Ave. Hollywood, CA 90028 Hollywood CoS	(323) 308-1700	TWI							●
4	2010	<b>MARK TWAIN MS - 6-8</b> 2224 Walgrove Ave., Los Angeles, CA 90066 Venice CoS	(310) 305-3100	TWI							●
4	2016	<b>MARK TWAIN MS - 6-8</b> 2224 Walgrove Ave., Los Angeles, CA 90066 Venice CoS	(310) 305-3100	WLI						●	
1	2013	<b>QUEEN ANNE ES - TK-5</b> 1212 Queen Anne Pl., Los Angeles, CA 90019 LA Mid-City CoS	(323) 939-7322	TWI 50/50							●
4	2015	<b>RICHLAND ES - TK-6</b> 11562 Richland Ave., Los Angeles, CA 90064 West LA CoS	(310) 473-0467	TWI 50/50			●				
4	2016	<b>STONER AVE. ES - K-5</b> 11735 Braddock Dr., Culver City, CA 90230 Venice CoS	(310) 390-3396	OWI 50/50							●
4	2019	<b>VENICE HS - 9-11</b> 13000 Venice Blvd., Los Angeles, CA 90066 Venice CoS	(310) 577-4200	TWI							●
4	2019	<b>VENICE HS - 9-11</b> 13000 Venice Blvd., Los Angeles, CA 90066 Venice CoS	(310) 577-4200	WLI						●	
1	2020	<b>VIRGINIA RD - K-2</b> 29925 Virginia Rd., Los Angeles, CA 90016 LA Mid-City CoS	(323) 735-0570	TWI 50/50							●
1	2018	<b>WILSHIRE CREST ES - TK-3</b> 5241 W Olympic Blvd., Los Angeles CA, 90036 LA Mid-City CoS	(323) 938-5291	TWI 70/30							●

# Dual Language Education Programs

## Local District West

BD: Board District  
CoS: Community of Schools

OWI: One-Way Immersion TWI: Two-Way Immersion WLI: World Language Immersion  
● Arabic ● Armenian ● French ● Japanese ● Korean ● Mandarin ● Spanish

BD	Start Year	School/Grade Level	Phone	Master Plan Program/Model	A	AR	F	J	K	M	S
2	2002	WILTON PL. ES - K-5 745 S. Wilton Pl., Los Angeles, CA 90005 LA Mid-City CoS	(213) 389-1181	TWI 50/50							●
2	1994	WILTON PL. ES - K-5 745 S. Wilton Pl., Los Angeles, CA 90005 LA Mid-City CoS	(213) 389-1181	TWI 50/50						●	

“ There are hundreds of languages in the world, but a smile speaks them all. ”  
- Unknown author





**“ One language sets you in a corridor for life. Two languages open every door along the way. ”**  
**- Frank Smith**

**“Un idioma te pone en un corredor de por vida. Dos idiomas abren cada puerta a lo largo del camino”**  
**- Frank Smith**

一种语言可以为人生开启一条走廊。  
两种语言则会在这条人生走廊的沿上  
为你打开每一扇门。  
- 弗蘭克·史密斯

1つの言語が話せると、あなたの人生の道筋を定めてくれる。  
2つの言語が話せると、その人生の道中にある全てのドアが開く。  
- フランク・スミス

**Une langue vous met sur un chemin, deux langues vous ouvrent toutes les portes en cours de route.**  
**- Frank Smith**

한 언어를 잘 하면 이것은 곧 삶의 통로를 찾는 것입니다. 두 언어를 잘 하면 인생의 모든 기회의 문을 여는 것입니다.  
-프랭크 스미스

«Մեկ լեզուն բացում է միջանցք ամբողջ կյանքի համար: Երկու լեզուն բացում է յուրաքանչյուր դուռ այդ միջանցքում»:  
- Ֆրենկ Սմիթ

اللغة الواحدة تضعك على الممر، و لغتان تفتحان لك كل باب على طول المشوار

“If you talk to a man in a language he understands, that goes to his head. If you talk to him in his own language, that goes to his heart.”  
- Nelson Mandela



“Learning another language is not only learning different words for the same things, but learning another way to think about things.”  
- Flora Lewis

# Pathway Award and Seal of Biliteracy

## L.A. Unified Elementary School (5/6 Grade) Pathway to Biliteracy



## L.A. Unified Middle School (8th Grade) Pathway to Biliteracy



## L.A. Unified (12th Grade) Seal of Biliteracy



## California State (12th Grade) Seal of Biliteracy



\*Number includes double and triple Seal of Biliteracy Award

# Pathway to Biliteracy Award

## K-1, 5/6, 8th Grade Pathway to Biliteracy Award

Starting school year 2021-2022, students in kindergarten and first grade will be able to make a commitment to becoming bilingual and biliterate by embarking in the Pathway to Bilingualism. L.A. Unified recognizes elementary and middle school students who demonstrate excellence in English and another language through the Pathway Award. All K-1, 5/6, and 8th grade students have the opportunity to qualify for this award.



### Elementary School Biliteracy Pathway

Proficiency in English	Proficiency in a language other than English
Benchmark score on DIBELS (MOY) OR Text Reading Comprehension/Reading Inventory OR Other school assessment demonstrating grade level ELA standards (with approved waiver)	Completed reading log documenting 10 or more titles at grade level and an essay written by the student in a language other than English, with a score of "3" or "4" on the scoring rubric

### Middle School Biliteracy Pathway

Proficiency in English	Proficiency in a language other than English
Marks of "A" or "B" in English courses taken in Grade 7 <u>AND</u> Recommendation from the student's current 8th grade ELA teacher	Completed reading log documenting 10 or more titles at grade level <u>AND</u> Essay written by the student in a language other than English, with a score of "3" or "4" on the Scoring Rubric OR Completion of a second year L.A. Unified a-g world language course (e.g., Spanish 2AB) with the final mark of "A" in the last semester

\* Information on qualifying criteria for kindergarten and first grade will follow.

# L.A. Unified Seal of Biliteracy High School

## What is the 12th Grade L.A. Unified Seal of Biliteracy?

The L.A. Unified SEAL of Biliteracy Award is presented annually to graduating high school students who demonstrate excellence in English and in a Language Other Than English (LOTE).

## What is the L.A. Unified Seal of Biliteracy?

The L.A. Unified Seal of Biliteracy is a recognition awarded to graduating high school students who have attained a high level of proficiency in speaking, reading, and writing in English and in a LOTE.

This award builds upon the rich linguistic and cultural assets of the District's students and communicate that the mastery of English and other World Languages is an important skill that is advantageous in an ever-growing, interconnected global society.

## Do I qualify for the L.A. Unified Seal of Biliteracy?

Proficiency in English	Proficiency in LOTE
<ul style="list-style-type: none"><li>• "Meets Standard" or "Exceeds Standard" on 11th grade SBA (ELA)</li></ul> <p><u>AND</u></p> <ul style="list-style-type: none"><li>• Completion of all ELA graduation "b" requirements with 2.0+ coursework GPA, OR</li><li>• 3+ score on AP English Language or Literature exam, OR</li><li>• ELA teacher recommendation</li></ul>	<ul style="list-style-type: none"><li>• Completion of 4 years HS level World Language and Cultures coursework with 3.0+ coursework GPA, OR</li><li>• 3+ score on any AP LOTE exam, OR</li><li>• 600+ score on SAT Subject Test in LOTE, OR</li><li>• Passing a locally approved assessment that meets the rigor of an AP exam and tests all modalities of communication in the language</li></ul>

“A language is not just words. It's a culture, a tradition, a unification of a community, a whole history that creates what a community is. It's all embodied in a language.”  
- Noam Chomsky



# State Seal of Biliteracy High School



## What is the State Seal of Biliteracy?

The State Seal of Biliteracy (SSB) is a recognition awarded by the State Superintendent of Public Instruction to graduating high school students who have attained a high level of proficiency in speaking, reading, and writing in one or more languages in addition to English.

## Do I qualify for the State Seal of Biliteracy?

Proficiency in English	Proficiency in LOTE
<ul style="list-style-type: none"> <li>• “Meet Standard” or “Standard Exceeded” on 11th grade SBA (ELA) <u>AND</u></li> <li>• Completion of all ELA graduation “b” requirements, with 2.0+ coursework GPA</li> </ul>	<ul style="list-style-type: none"> <li>• Completion of 4 years HS level World Language and Cultures coursework with 3.0+ coursework GPA, AND oral proficiency comparable to that required to pass AP or IB exam, OR</li> <li>• 3+ score on any AP LOTE exam, OR</li> <li>• 600+ score on SAT Subject Test in LOTE, OR</li> <li>• 4+ in High Level (HL) and 5+ in Standard Level (SL) score on International Baccalaureate exam, OR</li> <li>• Passing a locally approved assessment that meets the rigor of an AP exam and tests all modalities of communication in the language</li> </ul>

**If Student’s Primary Language is Other Than English:** “Early Advanced” proficiency in English on the California English Language Development Test (CELDT) or a level demonstrating English proficiency on the English Language Proficiency Assessment for California (ELPAC).

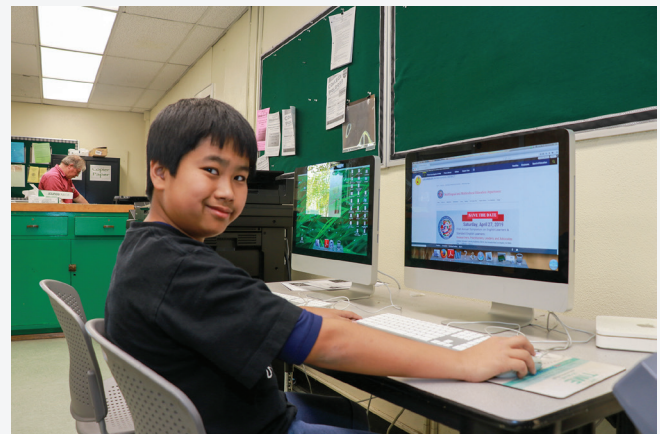


# World Languages and A-G Requirements

Tom Torlakson, (former) State Superintendent of Public Instruction confirmed the importance of learning world languages when he stated, “The mission of Global California 2030 is to equip students with the world languages skills to succeed in the global economy and to fully engage with the diverse mixture of cultures and languages found in California and throughout the world. We are setting high goals and dreaming big to help our students and our state.”

Moving into a global society, the importance of learning another language became indisputably important. Being bilingual/biliterate provides many benefits including strengthening intergroup relationships, affirming the value of diversity, honoring multiple cultures and languages of a community, increasing appeal for employment, and much more. L.A. Unified currently offers the following languages: American Sign Language (ASL), Arabic, Filipino, French, German, Italian, Japanese, Korean, Latin, Mandarin, Russian, and Spanish.

To ensure all L.A. Unified graduates have the option to enroll directly into a university and be prepared for a career, the District has aligned its graduation requirements with the California State University (CSU) A-G requirements, beginning with the graduating class of 2016. Students must earn a grade of “D” or better in “A-G” courses and meet California Department of Education Requirements as well as satisfy additional L.A. Unified requirements for graduation. In order to graduate, students must fulfill a number of requirements including completing at least two years of world languages.



# World Languages Programs

## Local District Central

● Arabic ● American Sign Language ● Filipino ● French ● German  
 ● Italian ● Japanese ● Korean ● Latin ● Mandarin ● Russian ● Spanish

LD: Local District BD: Board District

LD	BD	School/Grade Level	A	ASL	FI	F	G	I	J	K	L	M	R	S
C	1	<b>32ND ST. USC PERFORMING ARTS MAGNET</b> 822 W. 32nd St., Los Angeles, CA 90007										●	●	●
C	7	<b>DR MAYA ANGELOU COMMUNITY HS</b> 300 E. 53rd St., Los Angeles, CA 90011												●
C	2	<b>BELMONT HS</b> 1575 W. 2nd St., Los Angeles, CA 90026												●
C	2	<b>BERENDO MS</b> 1157 S. Berendo St., Los Angeles, CA 90006												●
C	5	<b>CARVER MS</b> 4410 McKinley Ave., Los Angeles, CA 90011								●				
C	2	<b>CASTELAR</b> 840 Yale St., Los Angeles, CA 90012										●		
C	2	<b>TRI-C COMMUNITY DAY SCHOOL</b> 716 E. 14th St. 2nd flr., Los Angeles, CA 90021												●
C	2	<b>CENTRAL CONTINUATION HIGH</b> 716 E. 14th St., Los Angeles, CA 90021												●
C	2	<b>WILLIAM JEFFERSON CLINTON MS</b> 3500 S Hill St., Los Angeles, CA 90017												●
C	2	<b>CONTRERAS LC ALC</b> 322 Lucas Ave., Los Angeles, CA 90017												●
C	2	<b>CONTRERAS LC BUS TR</b> 322 Lucas Ave., Los Angeles, CA 90017												●
C	2	<b>CONTRERAS LC GLBL ST</b> 322 Lucas Ave., Los Angeles, CA 90017												●
C	2	<b>CONTRERAS LC SOC JUS</b> 322 Lucas Ave., Los Angeles, CA 90017												●
C	2	<b>CORTINES SCH OF VAPA</b> 450 N. Grand Ave., Los Angeles, CA 90012		●		●								●
C	2	<b>DOWNTOWN BUSINESS MAGNET</b> 1081 W Temple St., Los Angeles, CA 90012										●		●



# World Languages Programs

## Local District Central

● Arabic ● American Sign Language ● Filipino ● French ● German  
 ● Italian ● Japanese ● Korean ● Latin ● Mandarin ● Russian ● Spanish

LD: Local District BD: Board District

LD	BD	School/Grade Level	A	ASL	FI	F	G	I	J	K	L	M	R	S
C	5	<b>EAGLE ROCK HIGH SCHOOL</b> 1750 Yosemite Dr., Los Angeles, CA 90041	●			●						●		●
C	2	<b>EARLY COLLEGE ACADEMY</b> 400 W. Washington Blvd., Los Angeles 90015												●
C	1	<b>FOSHAY LC</b> 3751 S. Harvard Blvd., Los Angeles, CA 90018										●		●
C	5	<b>FRANKLIN HS</b> 820 N. Avenue 54, Los Angeles, CA 90042												●
C	5	<b>HIGHLAND PARK HS</b> 928 N. Avenue 53, Los Angeles, CA 90042												●
C	5	<b>IRVING MS MME MAG</b> 3010 Estara Ave., Los Angeles, CA 90065												●
C	5	<b>JEFFERSON SH</b> 1319 E. 41st St. Los Angeles, CA 90011												●
C	2	<b>KAHLO HS</b> 1924 S. Los Angeles St., Los Angeles, CA 90011												●
C	2	<b>KIM ACADEMY</b> 615 S. Shatto Pl., Los Angeles, CA 90005				●				●				●
C	5	<b>KING MS MAG FLM/MDIA</b> 4201 Fountain Ave., Los Angeles, CA 90029										●		
C	5	<b>LOGAN ACADEMY</b> 1711 W. Montana St., Los Angeles, CA 90026												●
C	1	<b>MANUAL ARTS SH</b> 4131 S. Vermont Ave., Los Angeles, CA 90037										●		●
C	5	<b>MARSHALL SH</b> 3939 Tracy St., Los Angeles, CA 90027	●											●
C	2	<b>MCALISTER HS CYESIS</b> 611 S. Carondelet St., Los Angeles, CA 90057												●
C	5	<b>NAVA COLLEGE PREP</b> 1319 E. 41st St., Los Angeles, CA 90011												●

# World Languages Programs

## Local District Central

● Arabic ● American Sign Language ● Filipino ● French ● German  
 ● Italian ● Japanese ● Korean ● Latin ● Mandarin ● Russian ● Spanish

LD: Local District BD: Board District

LD	BD	School/Grade Level	A	ASL	FI	F	G	I	J	K	L	M	R	S
C	2	<b>NEWMARK HS</b> 1575 W. 2nd St., Los Angeles, CA 90026												●
C	2	<b>ORTHOPAEDIC HSP SH MG</b> 300 W. 23rd St., Los Angeles, CA 90007				●								●
C	2	<b>RFK AMBSDR GLBL LDSH</b> 701 S. Catalina St., Los Angeles, CA 90005			●					●		●		●
C	2	<b>RFK LA SH ARTS</b> 701 S. Catalina St., Los Angeles, CA 90005												●
C	2	<b>RFK NEW OPEN WLD</b> 3201 W. 8th St., Los Angeles 90010				●				●				●
C	2	<b>RFK SCH VIS ARTS/HUM</b> 701 S Catalina St., Los Angeles 90005												●
C	2	<b>RFK UCLA COMM SCH</b> 700 S. Mariposa Ave., Los Angeles 90005												●
C	2	<b>ROYBAL LC</b> 1200 W. Colton St., Los Angeles 90026												●
C	2	<b>SANTEEC EC</b> 1921 S. Maple Ave., Los Angeles 90011											●	●
C	5	<b>SOTOMAYOR ART/SCI MAG</b> 2050 N. San Fernando Rd., Los Angeles 90065												●
C	2	<b>WEST ADAMS PREP SH</b> 1500 W. Washington Blvd., Los Angeles 90007												●

“ To learn a new language is to have one more window from which to look at the world. ”  
 - Chinese Proverb

# World Languages Programs

## Local District East

● Arabic ● American Sign Language ● Filipino ● French ● German  
 ● Italian ● Japanese ● Korean ● Latin ● Mandarin ● Russian ● Spanish

LD: Local District BD: Board District

LD	BD	School/Grade Level	A	ASL	FI	F	G	I	J	K	L	M	R	S
E	5	<b>BELL SH</b> 4328 Bell Ave., Bell, CA 90201	●			●								●
E	2	<b>BOYLE HEIGHTS HS</b> 544 S. Mathews St., Los Angeles 90033												●
E	2	<b>BOYLE HTS STEM MAG</b> 2550 E. 6th St., Los Angeles 90023												●
E	2	<b>BRAVO SH MEDICAL MAG</b> 1200 N. Cornwell St., Los Angeles 90033										●		●
E	2	<b>EL SERENO MS</b> 2839 N. Eastern Ave., Los Angeles 90032										●		●
E	5	<b>ELIZABETH LC</b> 4811 Elizabeth St., Cudahy, CA 90201												●
E	5	<b>GAGE MS</b> 2880 E. Gage Ave., Huntington Park, CA 90255												●
E	2	<b>GARFIELD SH</b> 5101 E. 6th St., Los Angeles 90022												●
E	2	<b>GRIFFITH MS STEAM MG</b> 4765 E. 4th St., Los Angeles 90022												●
E	5	<b>HUNTINGTN PK SH</b> 6020 Miles Ave., Huntington Park, CA 90255						●				●		●
E	5	<b>INTERNATIONAL ST LC</b> 5225 Tweedy Blvd., South Gate, CA 90280							●			●		●
E	5	<b>LEGACY SH STEAM</b> 5225 Tweedy Blvd., South Gate, CA 90280												●
E	5	<b>LEGACY SH VAPA</b> 5225 Tweedy Blvd., South Gate, CA 90280												●
E	2	<b>LINCOLN SH</b> 3501 N. Broadway Los Angeles, CA 90031										●		●
E	5	<b>MACES MAG</b> 5800 King Ave., Maywood, CA 90270				●					●			●

# World Languages Programs

## Local District East

● Arabic ● American Sign Language ● Filipino ● French ● German  
 ● Italian ● Japanese ● Korean ● Latin ● Mandarin ● Russian ● Spanish

LD: Local District BD: Board District

LD	BD	School/Grade Level	A	ASL	FI	F	G	I	J	K	L	M	R	S
E	5	<b>MARQUEZ SH HPIAM</b> 6361 Cottage St., Huntington Park, CA 90255												●
E	5	<b>MARQUEZ SH LIBRA</b> 6361 Cottage St., Huntington Park, CA 90255												●
E	5	<b>MARQUEZ SH SOC JUS</b> 6361 Cottage St., Huntington Park, CA 90255												●
E	5	<b>MAYWOOD ACADEMY SH</b> 6125 Pine Ave., Maywood, CA 90270				●								●
E	2	<b>MENDEZ SH</b> 1200 Plaza Del Sol, Los Angeles, CA 90033										●		●
E	2	<b>METROPOLITAN HS</b> 727 S. Wilson St., Los Angeles, CA 90021												●
E	2	<b>MONTEREY HS</b> 466 S. Fraser Ave., Los Angeles, CA 90022												●
E	5	<b>NIGHTINGALE MS</b> 3311 N. Figueroa St., Los Angeles, CA 90065										●		●
E	5	<b>OCHOA LC</b> 5027 Live Oak St., Cudahy, CA 90201												●
E	5	<b>ODYSSEY HS</b> 8693 Dearborn Ave., South Gate, CA 90280												●
E	2	<b>PUEBLO DE LA HS</b> 2506 Alta St., Los Angeles, CA 90031												●
E	2	<b>RAMONA HS</b> 231 S. Alma Ave., Los Angeles, CA 90063												●
E	5	<b>RODIA HS</b> 2701 Sequoia Dr., South Gate, CA 90280												●
E	2	<b>ROOSEVELT SH</b> 456 S. Mathews St., Los Angeles, CA 90033				●								●
E	2	<b>ROOSEVELT SH STM MAG</b> 456 S. Mathews St., Los Angeles, CA 90033												●

# World Languages Programs

## Local District East

● Arabic ● American Sign Language ● Filipino ● French ● German  
 ● Italian ● Japanese ● Korean ● Latin ● Mandarin ● Russian ● Spanish

LD: Local District BD: Board District

LD	BD	School/Grade Level	A	ASL	FI	F	G	I	J	K	L	M	R	S
E	5	<b>SAN ANTONIO HS</b> 2911 Belgrave Ave., Huntington Park, CA 90255												●
E	2	<b>SOLIS LA</b> 319 N. Humphreys Ave., Los Angeles, CA 90022												●
E	5	<b>SOUTH EAST SH</b> 2720 Tweedy Blvd., South Gate, CA 90280												●
E	5	<b>SOUTH GATE MS</b> 4100 Firestone Blvd., South Gate, CA 90280												●
E	5	<b>SOUTH GATE SH</b> 3351 Firestone Blvd., South Gate, CA 90280										●		●
E	5	<b>SOUTHEAST MS</b> 2560 Tweedy Blvd., South Gate, CA 90280				●								
E	2	<b>STEVENSON CCP</b> 725 S. Indiana St., Los Angeles, CA 90023												●
E	2	<b>TORRES ELA PA MAG</b> 4211 Dozier St., Los Angeles, CA 90063												●
E	2	<b>TORRES ENG &amp; TECH</b> 4211 Dozier St., Los Angeles, CA 90063												●
E	2	<b>TORRES HUM/ART/TECH</b> 4211 Dozier St., Los Angeles, CA 90063												●
E	2	<b>TORRES RENAISSANCE</b> 4211 Dozier St., Los Angeles, CA 90063												●
E	2	<b>TORRES SOC JST LDSHP</b> 4211 Dozier St., Los Angeles, CA 90063												●
E	2	<b>WILSON SH</b> 4500 Multnomah St., Los Angeles, CA 90032										●		●

“You must be the change you want to see in the world.”  
 - Mahatma Gandhi

# World Languages Programs

## Local District Northeast

● Arabic ● American Sign Language ● Filipino ● French ● German  
 ● Italian ● Japanese ● Korean ● Latin ● Mandarin ● Russian ● Spanish

LD: Local District BD: Board District

LD	BD	School/Grade Level	A	ASL	FI	F	G	I	J	K	L	M	R	S
NE	6	<b>ARLETA SH</b> 14200 Van Nuys Blvd., Arleta, CA 91331				●								●
NE	6	<b>BURKE HS</b> 14630 Lanark St., Panorama City, CA 91402												●
NE	3	<b>CDS LONDON</b> 12924-A Oxnard St., Valley Glen, CA 91401												●
NE	6	<b>CHAVEZ LA ARTES MAG</b> 1001 Arroyo Ave., San Fernando, CA 91340												●
NE	6	<b>CHAVEZ LA ASE</b> 1001 Arroyo Ave., San Fernando, CA 91340												●
NE	6	<b>CHAVEZ LA SJ HUM AC</b> 1001 Arroyo Ave., San Fernando, CA 91340										●		●
NE	3	<b>EARHART HS</b> 5355 Colfax Ave., North Hollywood, California 91601												●
NE	6	<b>EAST VALLEY SH</b> 5525 Vineland Ave, North Hollywood, CA 91601		●										
NE	6	<b>EVERGREEN HS</b> 13101 Dronfield Ave., Sylmar, CA 91342												●
NE	6	<b>FULTON COLLEGE PREP</b> 7477 Kester Ave., Van Nuys, CA 91405												●
NE	3	<b>GRANT SH</b> 13000 Oxnard St., Van Nuys, CA 91401				●								●
NE	6	<b>LEWIS HS</b> 12508 Wicks St., Sun Valley, CA 91352												●
NE	3	<b>LONDON HS</b> 12924 Oxnard St., Van Nuys, CA 91401												●
NE	3	<b>MILLIKAN MS AC &amp; PAM</b> 5041 Sunnyslope Ave., Sherman Oaks, CA 91423												●
NE	6	<b>MISSION HS</b> 11015 O'Melveny Ave., San Fernando, CA 91340												●

# World Languages Programs

## Local District Northeast

● Arabic ● American Sign Language ● Filipino ● French ● German  
 ● Italian ● Japanese ● Korean ● Latin ● Mandarin ● Russian ● Spanish

LD: Local District BD: Board District

LD	BD	School/Grade Level	A	ASL	FI	F	G	I	J	K	L	M	R	S
NE	6	<b>MT LUKENS HS</b> 7705 Summitrose St., Tujunga, CA 91042												●
NE	3	<b>NO HOLLYWD SH</b> 5231 Colfax Ave., North Hollywood, CA 91601				●				●				●
NE	6	<b>PANORAMA SH</b> 8015 Van Nuys Blvd., Panorama City, CA 91402												●
NE	6	<b>POLYTECHNIC SH</b> 12431 Roscoe Blvd., Sun Valley, CA 91352		●										●
NE	3	<b>REED MS</b> 4525 Irvine Ave, North Hollywood, CA 91602												●
NE	6	<b>ROGERS HS</b> 14711 Gilmore St., Van Nuys, CA 91411												●
NE	6	<b>SAN FERNANDO MS</b> 130 N. Brand Blvd., San Fernando, CA 91340												●
NE	6	<b>SAN FERNANDO SH</b> 11133 O'melveny Ave., San Fernando, CA 91340												●
NE	6	<b>SCIENCE AC STEM MAG</b> 5525 Vineland Ave., North Hollywood, CA 91601												●
NE	6	<b>SUN VALLEY MAG ET</b> 7330 Bakman Ave., Sun Valley, CA 91352												●
NE	6	<b>SYLMAR ACAD BH/E MAG</b> 13050 Borden Ave., Sylmar, CA 91342												●
NE	6	<b>SYLMAR CHS</b> 13050 Borden Ave., Sylmar, CA 91342				●								●
NE	6	<b>VAN NUYS SH</b> 6535 Cedros Ave., Van Nuys, CA 91411				●								●
NE	6	<b>VERDGO HLS SH</b> 10625 Plainview Ave., Tujunga, CA 91042				●								●
NE	6	<b>VOCES MAG</b> 9171 Telfair Ave., Sun Valley, CA 91352												●

# World Languages Programs

## Local District Northwest

● Arabic ● American Sign Language ● Filipino ● French ● German  
 ● Italian ● Japanese ● Korean ● Latin ● Mandarin ● Russian ● Spanish

LD: Local District BD: Board District

LD	BD	School/Grade Level	A	ASL	FI	F	G	I	J	K	L	M	R	S
NW	3	<b>ADDAMS HS</b> 16341 Donmetz St., Granada Hills, CA 91344												●
NW	3	<b>AGGELER HS</b> 21050 Plummer St., Chatsworth, CA 91311												●
NW	3	<b>CANOGA PRK SH</b> 6850 Topanga Cyn Blvd., Canoga Park, CA 91303				●								●
NW	3	<b>CDS AGGELER</b> 21050 Plummer St., Chatsworth, CA 91311												●
NW	3	<b>CHATSWORTH CHS</b> 10027 Lurline Ave., Chatsworth, CA 91311				●		●		●				●
NW	3	<b>GROVER CLEVELAND CHS</b> 8140 Vanalden Ave., Reseda, CA 91335				●			●	●				●
NW	6	<b>EINSTEIN CONTINUATION HS</b> 15938 Tupper St., North Hills, CA 91343												●
NW	6	<b>ZANE GREY CONTINUATION HS</b> 18230 Kittridge St., Reseda, CA 91335												●
NW	3	<b>PATRICK HENRY MS</b> 17340 San Jose St., Granada Hills, CA 91344				●								●
NW	3	<b>PATRICK HENRY MS</b> 17340 San Jose St., Granada Hills, CA 91344				●								●
NW	3	<b>OLIVER WENDELL HOLMES MS</b> 9351 Paso Robles Ave., Northridge, CA 91325								●				●
NW	3	<b>INDEPENDENCE HS</b> 6501 Balboa Blvd., Lake Balboa, CA 91406												●
NW	3	<b>JOHN F KENNEDY SH</b> 11254 Gothic Ave., Granada Hills, CA 91344				●		●						●
NW	3	<b>LAKE BALBOA CP MAGNET K-12</b> 6701 Balboa Blvd., Lake Balboa, CA 91406		●		●								●
NW	3	<b>ERNEST LAWRENCE MS</b> 10100 Variel Ave., Chatsworth, CA 91311								●				●



# World Languages Programs

## Local District Northwest

● Arabic ● American Sign Language ● Filipino ● French ● German  
 ● Italian ● Japanese ● Korean ● Latin ● Mandarin ● Russian ● Spanish

LD: Local District BD: Board District

LD	BD	School/Grade Level	A	ASL	FI	F	G	I	J	K	L	M	R	S
NW	6	<b>JAMES MONROE SH</b> 9229 Haskell Ave., North Hills, CA 91343												●
NW	3	<b>ALFRED B NOBEL CHARTER MS</b> 9950 Tampa Ave., Northridge, CA 91324												●
NW	3	<b>NORTHRIDGE ACADEMY SH</b> 9601 Zelzah Ave., Northridge, CA 91325												●
NW	3	<b>OWENSMOUTH HS</b> 6921 Jordan Ave., Canoga park, CA 91303												●
NW	3	<b>DANIEL PEARL SH JRNL/CMM MAGNET</b> 6649 Balboa Blvd. Lake Balboa, CA 91406		●										●
NW	3	<b>GEORGE K PORTER MS</b> 15960 Kingsbury St., Granada Hills, CA 91344												●
NW	4	<b>PORTOLA CM</b> 18720 Linnet St., Tarzana, CA 91356												●
NW	6	<b>RESEDA CHARTER HS</b> 18230 Kittridge St., Reseda, CA 91335				●				●				●
NW	3	<b>SOCES MAG</b> 18605 Erwin St., Reseda, CA 91335		●		●				●		●		●
NW	3	<b>STONEY POINT HS</b> 10010 De Soto Ave., Chatsworth, CA 91311												●
NW	6	<b>SEPULVEDA MS</b> 15330 Plummer St, North Hills, CA 91343												●
NW	4	<b>TAFT CHS</b> 5461 Winnetka Ave., Woodland Hills, CA 91364		●		●				●				●
NW	4	<b>THOREAU HS</b> 5429 Quakertown Ave., Woodland Hills, CA 91364												●
NW	3	<b>VALLEY ACAD ARTS/SCI</b> 10445 Balboa Blvd., Granada Hills, CA 91344				●								●
NW	3	<b>WOODEN HS</b> 18741 Elkwood St., Reseda, CA 91335												●

# World Languages Programs

## Local District South

● Arabic ● American Sign Language ● Filipino ● French ● German  
 ● Italian ● Japanese ● Korean ● Latin ● Mandarin ● Russian ● Spanish

LD: Local District BD: Board District

LD	BD	School/Grade Level	A	ASL	FI	F	G	I	J	K	L	M	R	S
S	7	<b>ANGEL'S GATE HS</b> 3607 S. Gaffey St., San Pedro, CA 90731				●								●
S	7	<b>BANNING SH</b> 1527 Lakme Ave., Wilmington, CA 90744												●
S	7	<b>BETHUNE MS</b> 155 W. 69th St., Los Angeles, CA 90003												●
S	7	<b>CAROLDALE LC</b> 22424 Caroldale Ave., Carson, CA 90745		●										●
S	7	<b>CARSON ACAD ED &amp; EMP</b> 22328 S. Main St., Carson, CA 90745												●
S	7	<b>CARSON ACAD MED ARTS</b> 22328 S. Main St., Carson, CA 90745				●								●
S	7	<b>CARSON SH</b> 22328 S. Main St., Carson, CA 90745t		●		●					●			●
S	7	<b>DOROTHY V. JOHNSON CDS</b> 10601 S. Grandee Ave., Los Angeles, CA 90002												●
S	7	<b>WILLIAM J. JOHNSTON CDS</b> 2210 Taper Ave., San Pedro, CA 90731				●								●
S	7	<b>DODSON MS</b> 28014 Montereina Dr., Rancho Palos Verdes, CA 90275												●
S	7	<b>DREW MS</b> 8511 Compton Ave., Los Angeles, CA 90001												●
S	7	<b>DREW MS UP PBLC SRVC</b> 1415 Firestone Blvd., Los Angeles, CA 90001												●
S	7	<b>DYMALLY SH</b> 8800 S. San Pedro St., Los Angeles, CA 90003												●
S	7	<b>EAGLE TREE CONTN HS</b> 22628 S. Main St., Carson, CA 90745												●
S	7	<b>EDISON MS</b> 6500 Hooper Ave., Los Angeles, CA 90001				●								●

# World Languages Programs

## Local District South

● Arabic ● American Sign Language ● Filipino ● French ● German  
 ● Italian ● Japanese ● Korean ● Latin ● Mandarin ● Russian ● Spanish

LD: Local District BD: Board District

LD	BD	School/Grade Level	A	ASL	FI	F	G	I	J	K	L	M	R	S
S	7	<b>FREMONT SH</b> 7676 S. San Pedro St., Los Angeles, CA 90003												●
S	7	<b>GARDENA SH</b> 1301 W 182nd St., Gardena, CA 90248								●				●
S	7	<b>GOMPERS MS</b> 234 E 112th St., Los Angeles, CA 90061												●
S	7	<b>GOMPERS MS UP MED MAG</b> 11227 S. San Pedro St., Los Angeles, CA 90061												●
S	7	<b>HOPE HS</b> 7840 Towne Ave., Los Angeles, CA 90003												●
S	7	<b>ISAACS AVALON HS</b> 1425 N. Avalon Blvd., Wilmington, CA 90744												●
S	7	<b>JORDAN SH</b> 2265 E. 103rd St., Los Angeles, CA 90002												●
S	7	<b>KING-DREW SH MD/S MG</b> 1601 E. 120th St., Los Angeles, CA 90059				●					●			●
S	7	<b>MONETA HS</b> 17951 s Budlong Ave., Gardena, CA 90248												●
S	7	<b>NARBONNE SH</b> 24300 S. Western Ave., Harbor City, CA 90710				●								●
S	7	<b>NARBONNE SH HARTS LA</b> 24300 Western Ave., Harbor City, CA 90710												●
S	7	<b>PATTON HS</b> 24514 S. Western Ave., Harbor City, CA 90710												●
S	7	<b>PEARY MS</b> 1415 W. Gardena Blvd., Gardena, CA 90247								●				●
S	7	<b>RANCHO DOMNGZ PREP</b> 4110 Santa Fe Ave., Long Beach, CA 90810												●
S	7	<b>RILEY HS CYESIS</b> 1524 E. 103rd St., Los Angeles, CA 90002												●

# World Languages Programs

## Local District South

- Arabic
- American Sign Language
- Filipino
- French
- German
- Italian
- Japanese
- Korean
- Latin
- Mandarin
- Russian
- Spanish

LD: Local District    BD: Board District

LD	BD	School/Grade Level	A	ASL	FI	F	G	I	J	K	L	M	R	S
S	7	<b>RIVERA LC COM &amp; TECH</b> 6100 S. Central Ave., Los Angeles, CA 90001												●
S	7	<b>RIVERA LC GD STEAM AC</b> 6100 S. Central Ave., Los Angeles, CA 90001												●
S	7	<b>RIVERA LC PERF ARTS</b> 6100 S. Central Ave., Los Angeles, CA 90001												●
S	7	<b>RIVERA LC PUB SRV</b> 6100 S. Central Ave., Los Angeles, CA 90001												●
S	7	<b>SAN PEDRO SH</b> 1001 w 15th St., San Pedro, CA 90731						●						●
S	7	<b>VLADOVIC HARBOR TPA</b> 1111 Figueroa Pl., Wilmington, CA 90744												●
S	7	<b>WHITE MS</b> 22102 S. Figueroa St., Carson, CA 90745												●
S	1	<b>YOUTH OPPORTUNITIES UNLTD ALT HS</b> 915 W. Manchester Ave., Los Angeles, CA 90044												●

“Being bilingual is my superpower!”  
- Señora Lee



# World Languages Programs

## Local District West

● Arabic ● American Sign Language ● Filipino ● French ● German  
 ● Italian ● Japanese ● Korean ● Latin ● Mandarin ● Russian ● Spanish

LD: Local District BD: Board District

LD	BD	School/Grade Level	A	ASL	F	FI	G	I	J	K	L	M	R	S
W	1	<b>BALA</b> 1511 W 110th St, Los Angeles, CA 90047									●			●
W	4	<b>BANCROFT MS</b> 929 N. Las Palmas Ave., Los Angeles, CA 90038										●		●
W	4	<b>BERNSTEIN SH</b> 1309 N. Wilton Pl., Hollywood, CA 90028										●		●
W	4	<b>BERNSTEIN SH STEM</b> 1309 N. Wilton Pl., Hollywood, CA 90028												●
W	1	<b>BURROUGHS MS</b> 600 S. McCadden Pl., Los Angeles, CA 90005								●				●
W	4	<b>RICHARD A. ALONZO CDS</b> 5755 Fountain Ave., Los Angeles, CA 90028												●
W	4	<b>CDS WEST HOLLYWOOD</b> 1049 N. Fairfax Ave., West Hollywood, CA 90046												●
W	1	<b>CHEVIOT HILLS HS</b> 9200 Cattaraugus Ave., Los Angeles, CA 90034												●
W	1	<b>COCHRAN MS</b> 4066 W. Johnnie Cochran Vista, Los Angeles, CA 90019												●
W	1	<b>CRENSHAW MAG STEMM</b> 5010 11th Ave., Los Angeles, CA 90043				●								●
W	1	<b>DORSEY SH</b> 3537 Farmdale Ave., Los Angeles, CA 90016												●
W	1	<b>ELLINGTON HS</b> 1541 W. 110th St., Los Angeles, CA 90047												●
W	4	<b>FAIRFAX SH</b> 7850 Melrose Ave., Los Angeles, CA 90046				●				●				●
W	1	<b>GAL KING SCH FOR STEM</b> 1067 West Blvd., Los Angeles, CA 90019												●
W	1	<b>HAMILTON SH</b> 2955 S. Robertson Blvd., Los Angeles, CA 90034	●	●		●						●		●
W	1	<b>HAWKINS SH C/DAGS</b> 825 W. 60th St., Los Angeles, CA 90044												●

# World Languages Programs

## Local District West

● Arabic ● American Sign Language ● Filipino ● French ● German  
 ● Italian ● Japanese ● Korean ● Latin ● Mandarin ● Russian ● Spanish

LD: Local District BD: Board District

LD	BD	School/Grade Level	A	ASL	FI	F	G	I	J	K	L	M	R	S
W	1	<b>HAWKINS SH CHAS</b> 825 W. 60th St., Los Angeles, CA 90044												●
W	1	<b>HAWKINS SH RISE</b> 825 W. 60th St., Los Angeles, CA 90044												●
W	4	<b>HOLLYWOOD SH</b> 1521 N. Highland Ave., Los Angeles, CA 90028						●		●		●		●
W	1	<b>LACES MAG</b> 5931 W. 18th St., Los Angeles, CA 90035					●		●	●				●
W	4	<b>LE CONTE MS</b> 1316 N Bronson Ave, Los Angeles, CA 90028												●
W	1	<b>LOS ANGELES SH</b> 4650 W. Olympic Blvd., Los Angeles, CA 90019					●							●
W	1	<b>MANN UCLA COMM SCH</b> 7001 S. St. Andrews Pl., Los Angeles, CA 90047										●		
W	4	<b>MARK TWAIN MS</b> 2224 Walgrove Ave., Los Angeles, CA 90066										●		●
W	1	<b>MARLTON SCHOOL</b> 4000 Santo Tomas Dr., Los Angeles, CA 90008		●										
W	1	<b>MIDDLE COLLEGE HS</b> 1600 Imperial Hwy Bldg. 16, Los Angeles, CA 90047												●
W	4	<b>PHOENIX HS</b> 12971 Zanja St., Los Angeles, CA 90066												●
W	4	<b>REVERE CMS</b> 1450 Allenford Ave., Los Angeles, CA 90049												●
W	4	<b>UNIVERSITY HS CHARTER</b> 11800 Texas Ave., Los Angeles, CA 90025					●					●		●
W	4	<b>VENICE SH</b> 13000 Venice Blvd., Los Angeles, CA 90066		●		●		●	●			●		●
W	1	<b>VIEW PARK CONTN HS</b> 4701 Rodeo Rd., Los Angeles, CA 90016												●
W	1	<b>WASHINGTON PREP SH</b> 10860 S. Denker Ave., Los Angeles, CA 90047				●								●

# World Languages Programs

## Local District West and Other

- Arabic
- American Sign Language
- Filipino
- French
- German
- Italian
- Japanese
- Korean
- Latin
- Mandarin
- Russian
- Spanish

LD: Local District    BD: Board District

LD	BD	School/Grade Level	A	ASL	FI	F	G	I	J	K	L	M	R	S
W	4	<b>WESM HLTH/SPORTS MED</b> 7400 W. Manchester Ave., Los Angeles, CA 90045												●
W	4	<b>WHITMAN CONTINUATION HS</b> 7795 Rosewood Ave., Los Angeles, CA 90036												●
W	1	<b>YOUNG HS</b> 3051 W. 52nd St., Los Angeles, CA 90043												●
XS	3	<b>CARLSON HOSPITAL</b> 10952 Whipple St., North Hollywood, CA 91602												●
XS	2	<b>CITY OF ANGELS</b> 221 S Eastman Ave., Los Angeles, CA 90063												●
XS	2	<b>SECONDARY CDS</b> 727 S. Wilson St., Los Angeles, CA 90021												●



“The function of education is to teach one to think intensively and to think critically. Intelligence plus character- that is the goal of true education.”  
- Dr. Martin Luther, Jr.



LOS ANGELES UNIFIED SCHOOL DISTRICT

DIVISION OF INSTRUCTION  
MULTILINGUAL AND MULTICULTURAL EDUCATION DEPARTMENT  
DUAL LANGUAGE AND WORLD LANGUAGES PROGRAM OFFICE

333 S. Beaudry Ave., 25<sup>th</sup> Floor | Los Angeles | CA 90017 | (213) 241-5582 | [achieve.lausd.net/mmed](http://achieve.lausd.net/mmed)